

COMMUNITY ADVISORY COMMITTEE

LaGrieta Holloway, Chair
2021 Commission Update



MID-OHIO REGIONAL
MORPC
PLANNING COMMISSION

WHAT IS THE CAC?



MORPC

The Community Advisory Committee represents everyday people. We're residents who volunteer to review and provide feedback on MORPC's transportation-related programs, plans, and projects.

- MPO-focused, but also a sounding board for non-transportation initiatives at MORPC
- Represents a broad segment of the population
- Meets in the late afternoon/evening eight times a year



CAC MEMBERSHIP



- General Public
- Geographic representation
 - Urban, suburban, and rural
- Populations disadvantaged or underserved by transportation
 - Low-income, minority, older adults, veterans, mental/physical disabilities
- Environmental interests
 - Historic/archaeological, pedestrian/bicyclist, health
- Business
 - Small business, real estate, developers
- Limited to 24 members

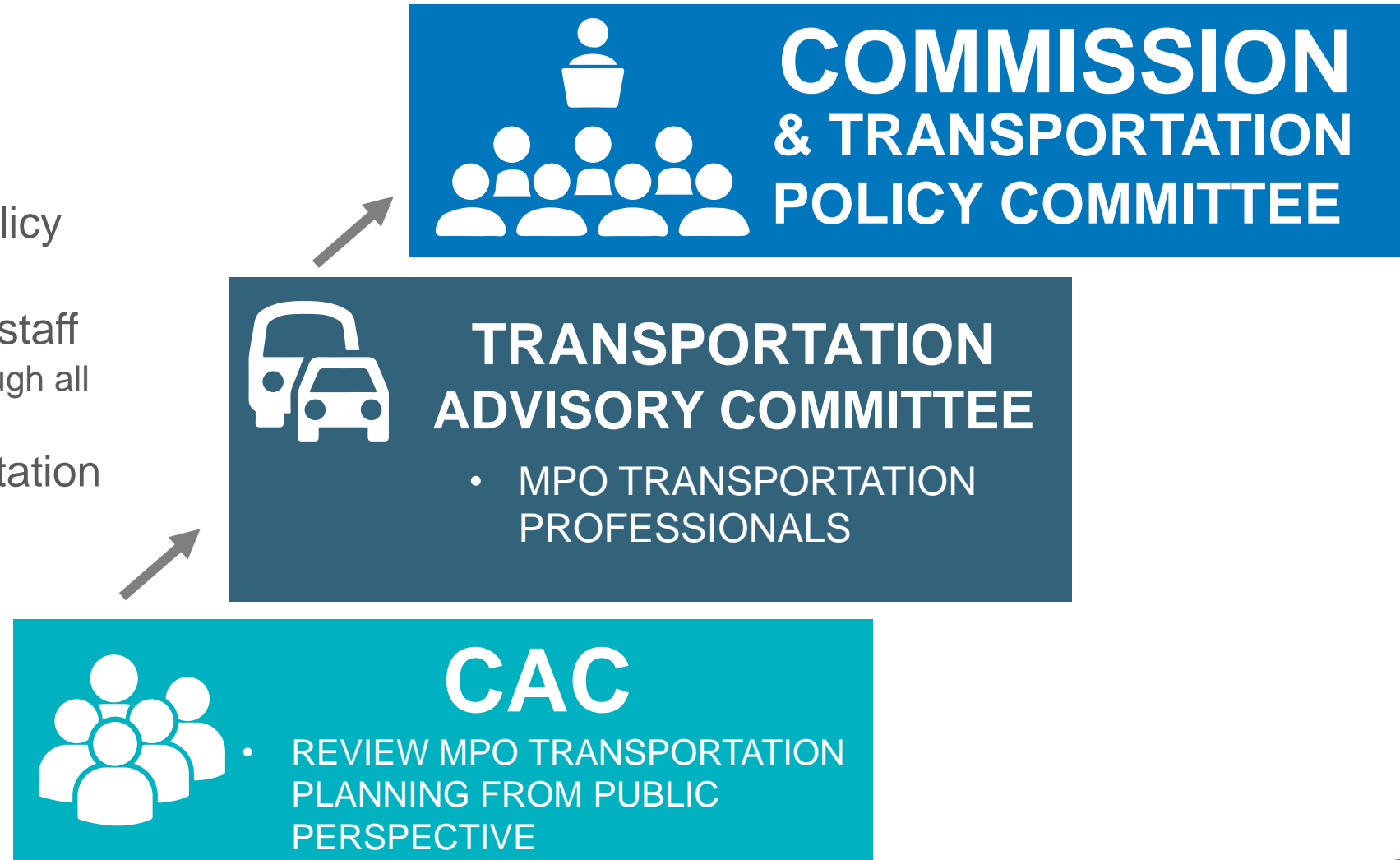


Eight new members in the past year!

CAC IN THE TRANSPORTATION PLANNING PROCESS



- Essential to MORPC's public participation process
- Advises the Transportation Policy Committee
- Two-way communication with staff
 - From problem identification through all developmental phases
- First consideration of transportation resolutions

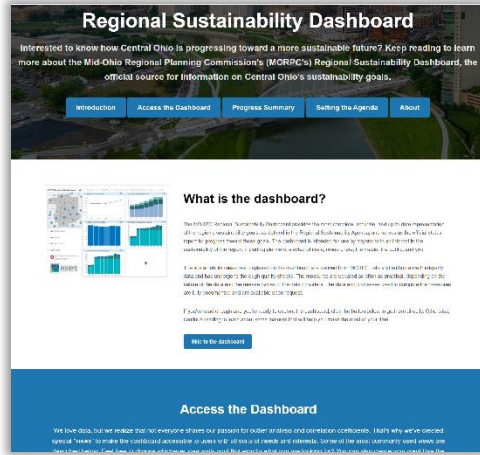


CAC SUBJECT MATTER



**2020 - 2050
COLUMBUS AREA
METROPOLITAN
TRANSPORTATION PLAN**

Adopted May 2020



Regional Sustainability Dashboard

Interested to know how Central Ohio is progressing toward a more sustainable future? Keep reading to learn more about the Mid-Ohio Regional Planning Commission's (MORPC's) Regional Sustainability Dashboard, the official source for information on Central Ohio's sustainability goals.

[Introduction](#) [Access the Dashboard](#) [Progress Summary](#) [Setting the Agenda](#) [About](#)


What is the dashboard?

The MORPC's Regional Sustainability Dashboard is an interactive online tool that provides a comprehensive overview of the region's progress toward its sustainability goals. It is designed to be user-friendly and accessible to all stakeholders, providing a clear and concise overview of the region's progress toward its sustainability goals. The dashboard is a valuable tool for tracking progress and identifying areas for improvement. It is designed to be user-friendly and accessible to all stakeholders, providing a clear and concise overview of the region's progress toward its sustainability goals.


[Go to the dashboard](#)

Access the Dashboard

We have data, but we realize that not everyone shares our passion for outdoor air and climate protection. That's why we've created this tool to make the information accessible to all. It's a place where you can learn more about the region's progress toward its sustainability goals. It's a place where you can learn more about the region's progress toward its sustainability goals.




**TRANSPORTATION
IMPROVEMENT PROGRAM
STATE FISCAL YEAR
2021 - 2024**



**PAVING
THE WAY**

CENTRAL OHIO ROAD
CONSTRUCTION INFORMATION



MID-OHIO REGIONAL
MORPC
PLANNING COMMISSION

**CENTRAL OHIO
EMPLOYER
TELEWORK
POLICY GUIDE //**



**CENTRAL OHIO
TDM STRATEGIC
PLAN 2020-2021**



**RAPID SPEED
TRANSPORTATION
INITIATIVE**

LaGrieta Holloway

Chair

Community Advisory Committee



MID-OHIO REGIONAL
MORPC
PLANNING COMMISSION

T: 614.228.2663

111 Liberty Street, Suite 100
Columbus, OH 43215