

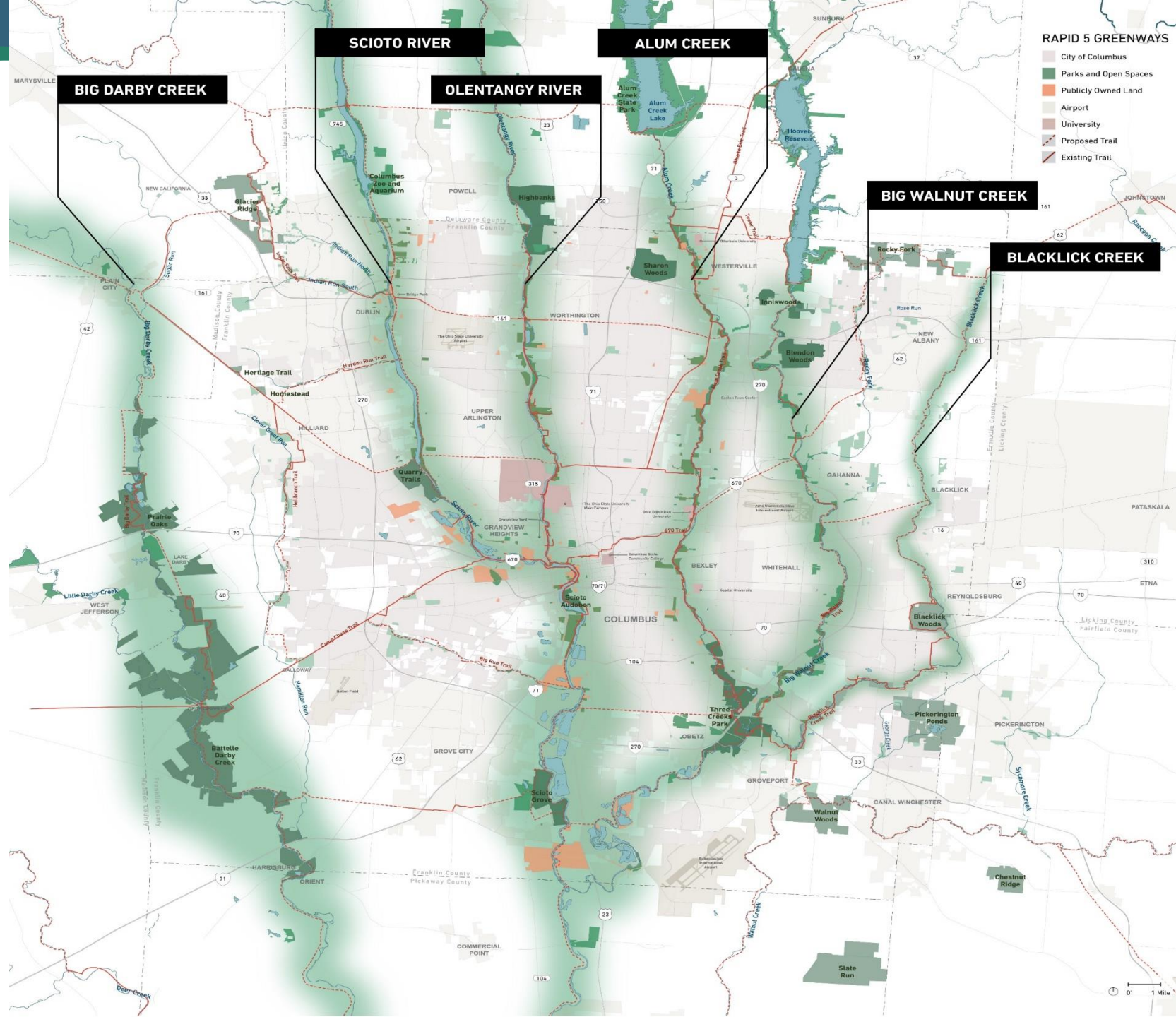
RAPID 5

Visioning Summary

Commission 9/9/2021



MID-OHIO REGIONAL
MORPC
PLANNING COMMISSION



RAPID 5 Sponsors

PLATINUM

ADS

The Columbus Foundation

Thrive Companies

City of Columbus

The Ohio State University

GOLD

City of Dublin

Columbus Downtown Development
Corporation and Capital South

Mid-Ohio Regional Planning Commission

COTA

Columbus and Franklin County Metro
Parks

Nationwide Realty Investors/
Capital South, Ltd

SILVER

CASTO

City of Upper Arlington

M/I Homes

City of Bexley

City of Westerville

One Columbus

City of Gahanna

City of Whitehall

Orange Barrel Media

City of Grandview Heights

City of Worthington

The Pizzuti Companies

City of Grove City

Corna Kokosing

Turner Construction

City of Hilliard

ENGIE

Village of Marble Cliff

City of New Albany

Franklin County Engineer

Village of Obetz

City of Reynoldsburg

Jefferson Township

BIG DARBY



The Darby Creeks Region

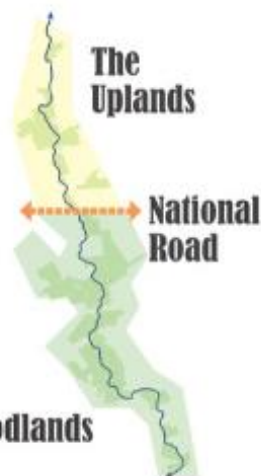
Discover the Creeks

The authentic Darby Creeks experience is rooted in its rich history of wildlife preservation and land management. Restored native prairies, pristine woodland edges and ecologically sensitive wildlife provide for the most unique setting in Central Ohio. The "Crown Jewel" of the Metro Parks system presents opportunities for both active and passive recreational activities taking advantage of the breathtaking setting.

THE UPLANDS: The upland prairies and meadows provide for a more active recreational experience. This zone is north of the most preserved wildlife habitat zones, which allow for recreational uses such as canoeing, kayaking and equestrian trails.

NATIONAL ROAD: The Darby Dan farmlands of the central corridor along Route 40, the historic national road, provides for an ideal location for "The Heart" of the region. The proposed "Darby Village" is an idea to create a micro-village serving as a gateway to the region and a critical trail link along the corridor.

THE WOODLANDS: The downstream Woodlands is the home to much of the protected wildlife in the corridor. This area south of the Darby Dan Farm provides for the rich habitat of birds, fish and endangered mussel populations. Opportunities for passive recreation could include yurts, camping and hiking.



A Region of Activities

COME FOR THE DAY, STAY FOR THE WEEKEND



CANOEING

Canoes can be rented in multiple locations providing access to the scenic river.



HOT AIR BALLOON

At Darby Dan Airfield, seasonal opportunities to take a majestic ride over the corridor.



EATERIES

Micro-villages sprinkled throughout the corridor offer opportunities to enjoy local food and drinks.



LODGING

A variety of lodging options are available from the new Darby Dan Inn to remote yurts that immerse you in nature.



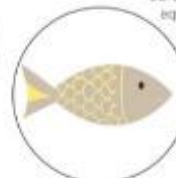
BISON

Located at the Battelle Darby Metro Park, see these grassland animals in open pastures.



GONDOLA

Get above the river and take a quiet gondola ride between Prairie Oaks and Battelle Darby Metro Parks.



FISHING

Enjoy designated fishing spots throughout the region.



WOODLANDS

Immersive wooded areas create beautiful hiking trails throughout the region.



MUSEUM

See historical trophies and memorabilia from Darby Dan Farm and its equestrian heritage.



The Darby Creeks experience allows for some to relax and unplug in quaint historic villages or creates opportunities for those that love the outdoors to take advantage of the untamed river corridor.

FROM THE AIR: Hot Air Balloon Rides along the Stream, Gondola Rides over the river

ON THE GROUND: Bicycle Rides through the Prairies, Horse Trails through the Farmlands

WITHIN THE CREEKS: Canoeing and kayaking along the river, fishing in designated areas

The Darby Creeks Tourism Board

Visit the newly formed tourism board's website for more information on seasonal activities and events within the region.



BIG DARBY

Prairie Uplands

Plain City represents the northern terminus of the Greenbelt and serves as the most densely developed city in the region. The new Quarry Lakes Metro Park will allow for the connection of the Heritage trail from Hilliard and parts east to reach Plain City and the Darby Creeks region.

- 1 Plain City Brewing Co. overlooks the Darby
- 2 Restored bridge to complete the Heritage Trail into Plain City
- 3 Cultural Micro-village with brewery
- 4 Heritage Trail connects Plain City to Hilliard
- 5 Restored Prairie Grasslands
- 6 Heritage Trail extended into Plain City



A view of the Cultural Micro-village with overlooks

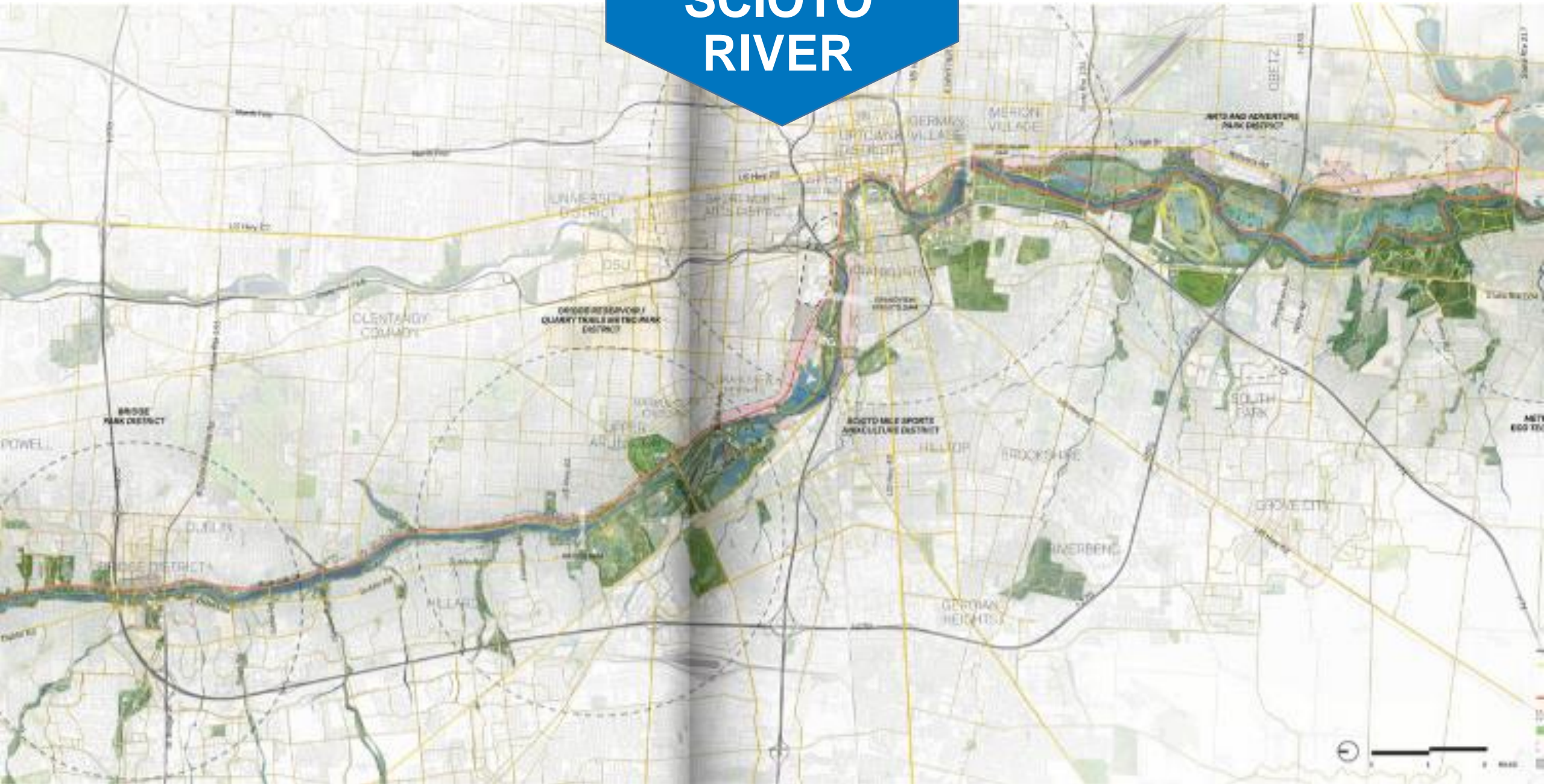


**Darby
Creeks**

a part of the **BIG DARBY WATERSHED**,
located within the **COLUMBUS, OHIO
METROPOLITAN AREA**



SCIOTO RIVER



SCIOTO RIVER

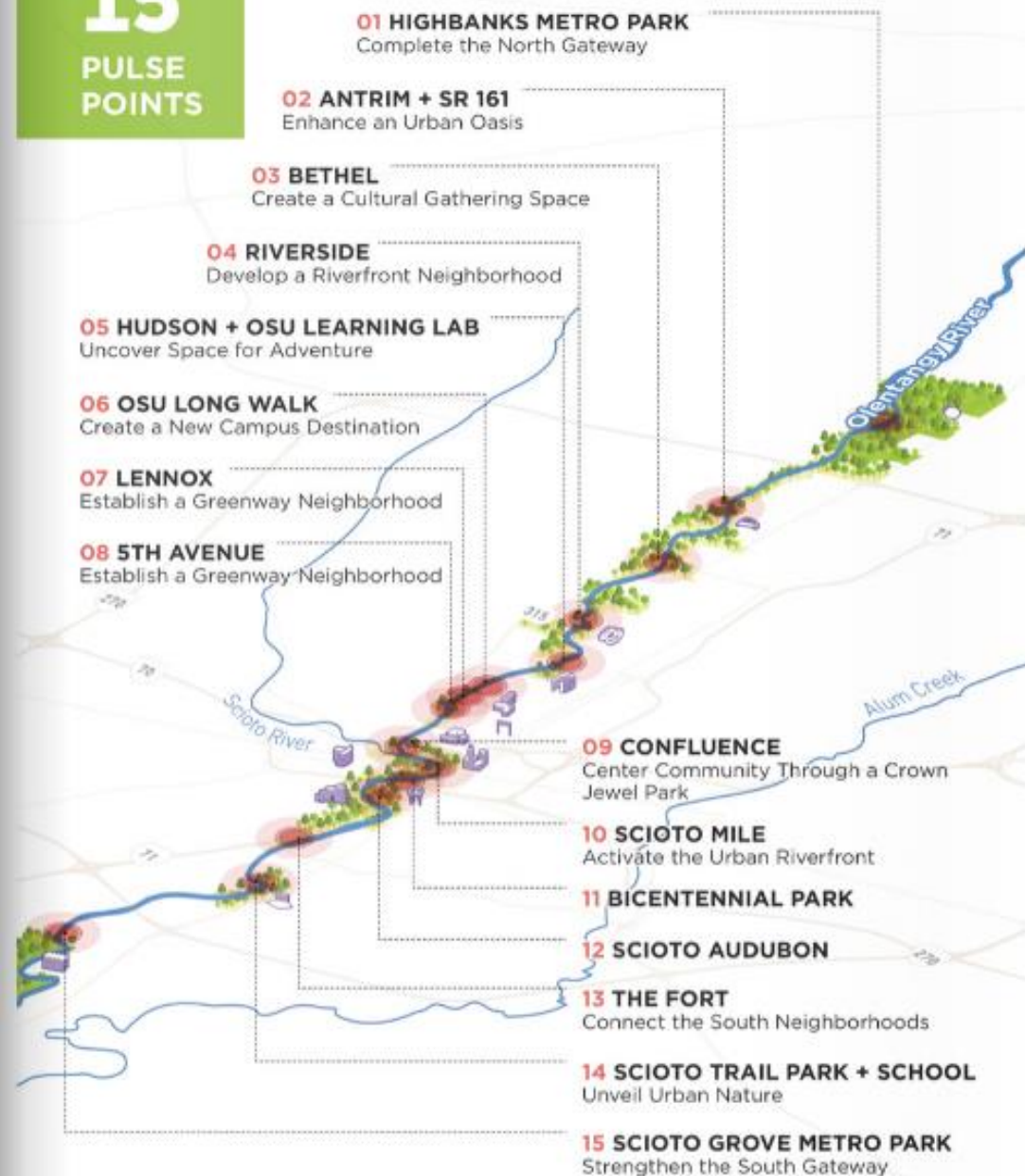
A WHITEWATER ADVENTURE EXPERIENCE GRIGGS RAPIDS COURSEWAY LOOKOUT & LANDING Griggs Dam to Dublin Road Water Treatment Plant Lowhead Dam

With the north side of Griggs Dam focused on flat water rowing and boating activities, the vision plan proposes incorporating a whitewater experience south of the dam, either through manmade and mechanical means, through natural water flow, or both. The experience could start in the expansion of the Quarry Trails Metro Park (proposed Shelly Art Park and Wetlands) and the creation of a starting pond that could also be connected to Griggs Reservoir and used as bypass to the dam. The water in the pond could be recirculated and exit to the river through a whitewater rapids course that would merge into river. The river in the area could be enhanced with "riffles" and other whitewater interventions and end at the Dublin Road Water Treatment Plant low head dam, Lower Scioto Greenway trail and boat levy.



15

PULSE
POINTS



OLENTANGY RIVER

PULSE POINT CASE
STUDY:
CONFLUENCE

**Center Community through a Crown
Jewel Park**

The Franklinton neighborhood currently does not benefit from the nearby greenway trails or the Olentangy and Scioto Rivers because they are blocked off by infrastructure barriers—roads, railways, highways, and the floodwall; they are close in proximity, but lack access. An expanded and enhanced Confluence Park would create a better union between the neighborhood, the new CoverMyMeds headquarters, the new Crew Stadium, redevelopment of the Mount Carmel site, and the high-quality recreational amenities along the river. The new Confluence Park extends south, creating frontage along Broad Street to serve as a neighborhood park and to directly connect Franklinton residents with the riverfront. It would be a hub for youth recreation, with an indoor fieldhouse and outdoor basketball facilities. A sweeping circular pedestrian walkway, the “ONE Columbus” bridge, that spans across the Olentangy and Scioto Rivers, providing spectacular views of Downtown Columbus and Franklinton.



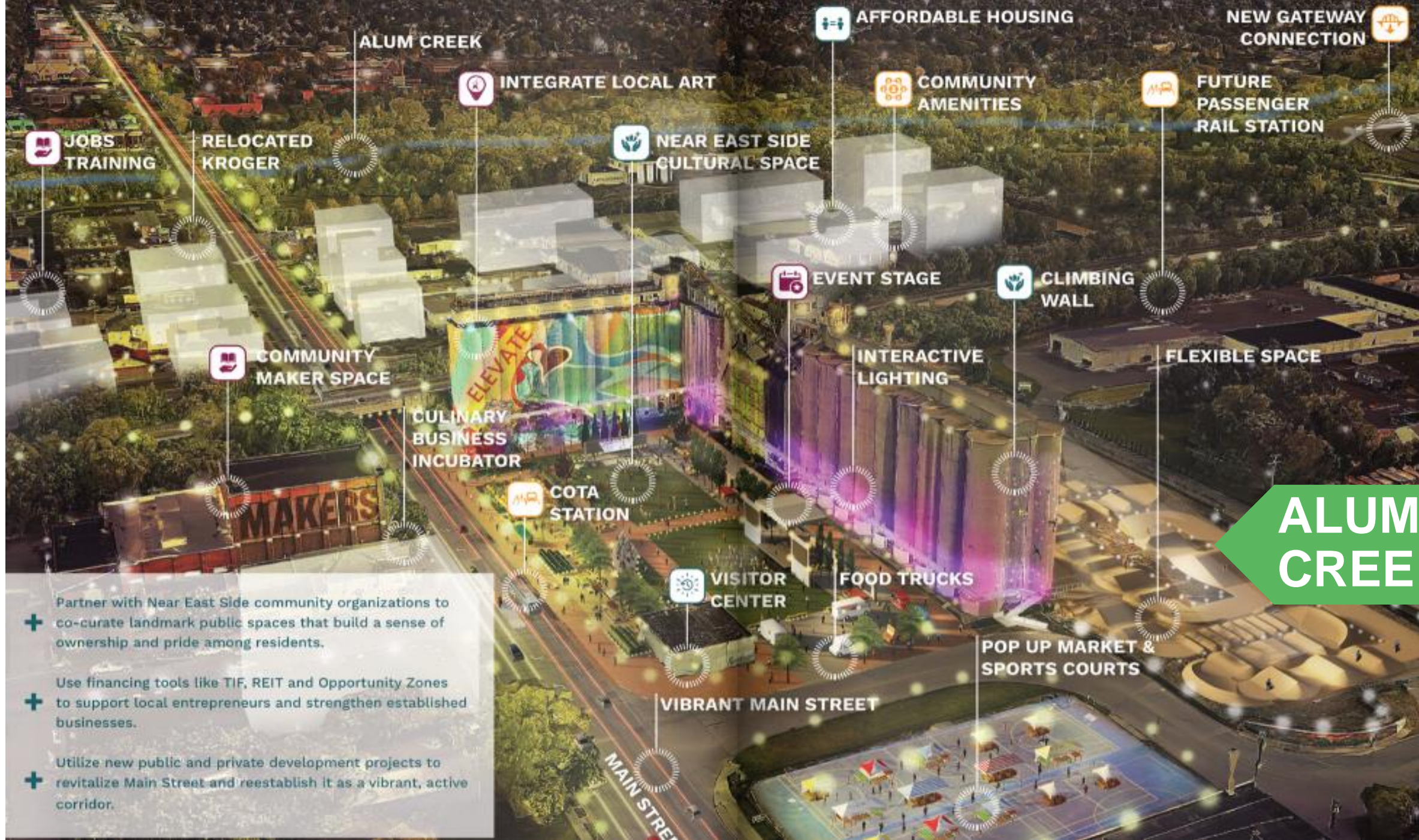
**OLENTANGY
RIVER**



ALUM CREEK

This vision for the Alum Creek corridor was co-created in partnership with dozens of corridor stakeholders who volunteered their time to share ideas that build upon the ambitious efforts already taking place across the region. Throughout the visioning process, there were four themes that resounded with the community and these can serve as the central tenets as the vision continues to evolve:

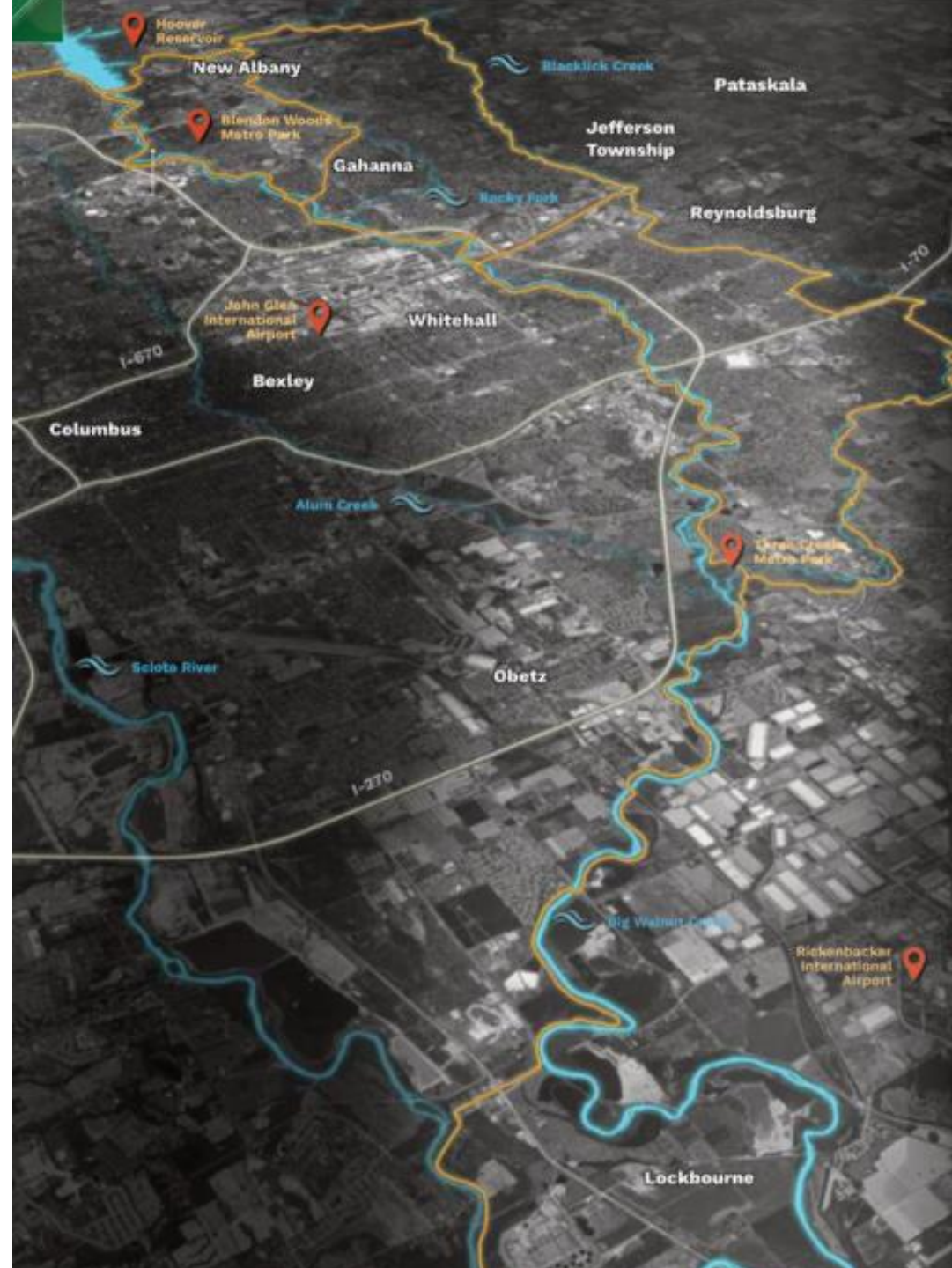
- Elevate and enhance green and blue assets along Alum Creek to better serve human, animal and plant health.
- Elevate the history of Alum creek, including its role as a significant route to freedom for people escaping slavery.
- Elevate community-serving institutions and enhance the connections between residents and resources, as well as voices of the diverse adjacent communities by proposing authentic opportunities to co-create the future design process.
- Elevate opportunities for local employment and economic mobility while incentivizing development that does not lead to displacement.



ALUM CREEK

- + Partner with Near East Side community organizations to co-curate landmark public spaces that build a sense of ownership and pride among residents.
- + Use financing tools like TIF, REIT and Opportunity Zones to support local entrepreneurs and strengthen established businesses.
- + Utilize new public and private development projects to revitalize Main Street and reestablish it as a vibrant, active corridor.

BIG WALNUT



BIG WALNUT



NEXT STEPS

www.rapid5.org





BANDWANGO Trail Pass

Get Moving. Check In. Get Rewards.


Experience Columbus has teamed up with the Mid-Ohio Regional Planning Commission for a great outdoor trail pass program to enjoy with friends or family. These trails are perfect for hiking, biking, jogging, and even paddling! Try them all now—what are you waiting for?

Check out these links for more information and directions!

[Central Ohio Greenways Map](#)

[Central Ohio Biking Map](#)

[Rapid 5](#)



The card features a green header with a circular icon of a tree and a compass. To the right is a photograph of a person kayaking on a river. Below the header, the title 'Hike, Bike and Paddle Trail' is followed by a bulleted list of features. At the bottom is a green button with white text.

Hike, Bike and Paddle Trail

- Mobile exclusive
- Instantly delivered via text and email
- No apps to download
- Experience the nature of Central Ohio

Explore Now

How this Pass Works



Step 1 - Get Your Pass

This mobile exclusive passport showcases a variety of outdoor nature stops in Central Ohio to check-in at during your visit.



Step 2 - Receive Text

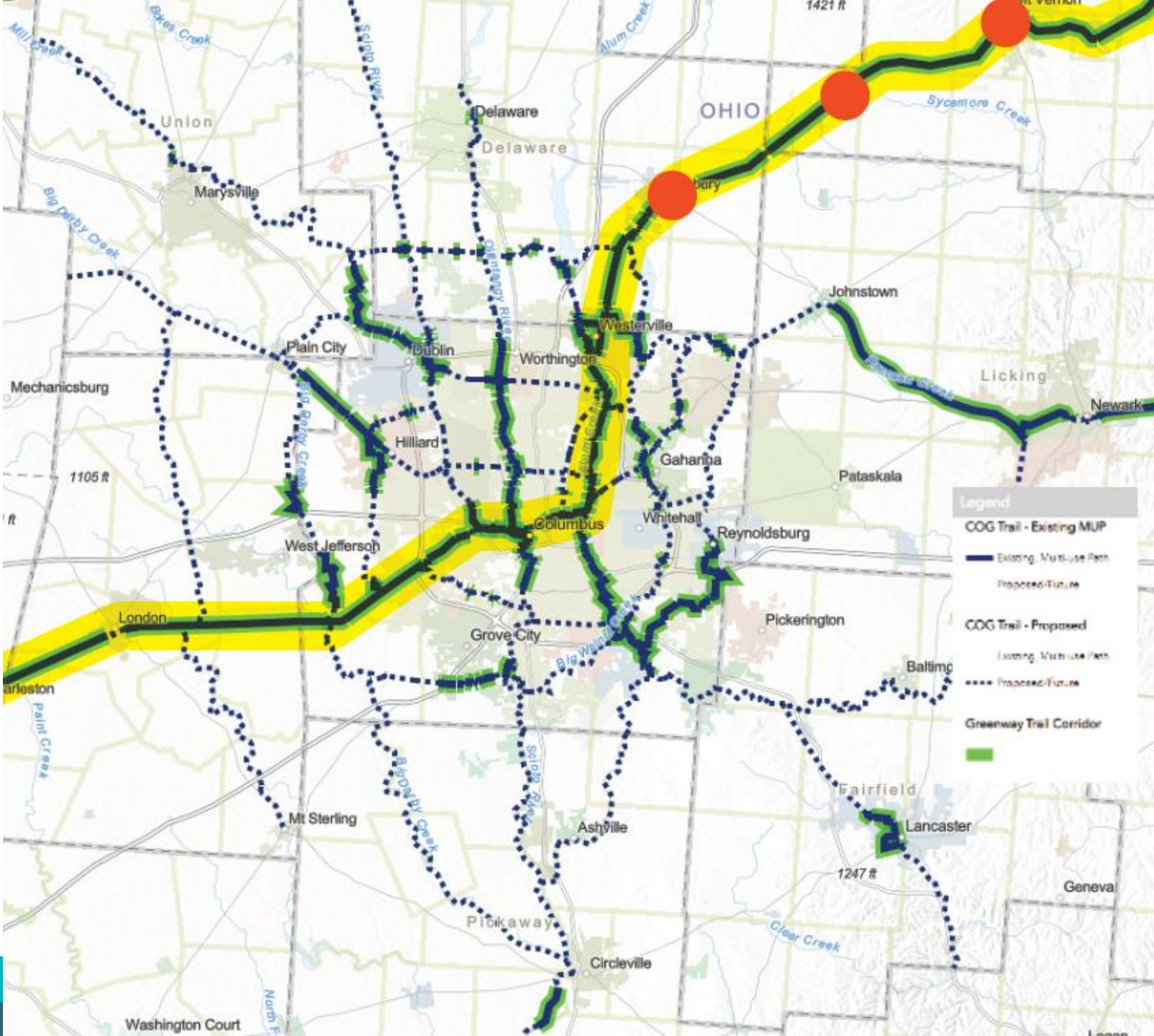
Your passport will be instantly delivered to your phone via text and email and is ready to use immediately! There is no app to download. Your pass can be saved to your phone's home screen for easy one-tap access.



Step 3 - Check-In

When visiting a participating location, simply check-in via GPS on your phone. You must be within .25 miles of the location to check-in.

TRAIL TOWN Initiative



SCOPE COMPONENTS



MORPC



PART 1

- Asset inventory and trail town visioning



PART 2

- Develop a general framework for a long-term trail town guide in Central Ohio



PART 3

- Short-term local community implementation strategies



THANK YOU!

Kerstin Carr, PhD

Director, Planning & Sustainability

Mid-Ohio Regional Planning Commission

T: 614.233.4163

kcarr@morpc.org

111 Liberty Street, Suite 100

Columbus, OH 43215



MID-OHIO REGIONAL
MORPC
PLANNING COMMISSION

