



REGIONAL LISTENING SESSION: INTEL ANNOUNCEMENT

Mid-Ohio Regional Planning Commission &
Licking County Planning & Development

February 24, 2022



MID-OHIO REGIONAL
MORPC
PLANNING COMMISSION

WELCOME

William Murdock, *Executive Director, MORPC*

Chris Harkness, *Executive Director, Licking County
Planning & Development*



MID-OHIO REGIONAL
MORPC
PLANNING COMMISSION

INTEL PROJECT BRIEFING

Matthew McQuade, *Managing Director, Business Dev., One Columbus*
Michael Loges, *Economic Development Manager, City of New Albany*



MID-OHIO REGIONAL
MORPC
PLANNING COMMISSION

Intel Project Overview



Intel in Ohio

Phase 1 by the Numbers



3,000
JOBS



\$405M
NEW PAYROLL



\$20B
CAPITAL INVESTMENT



Business Impact

- Largest private investment in Ohio history
- In addition to the 3,000 direct jobs and \$20 billion in capital investment, the project will:
 - Create 7,000 construction jobs
 - Create tens of thousands of additional indirect and support jobs
 - Add an estimated \$2.8 billion to Ohio's GSP
- Culmination of more than a decade of regional collaboration



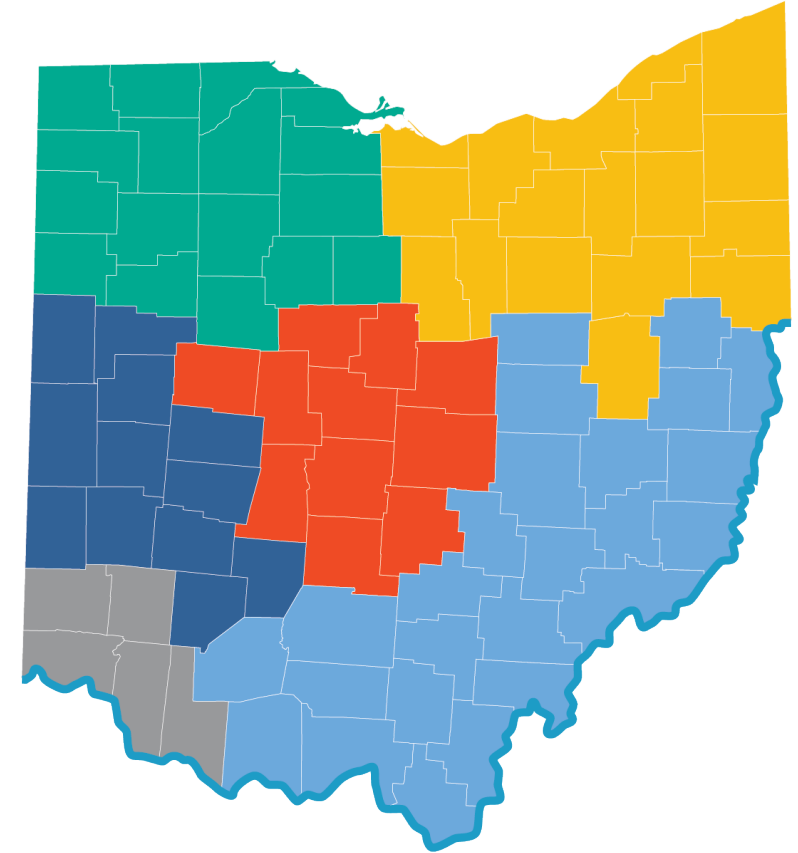
Ohio's Solution

Ohio is answering a national call to action. This investment will help alleviate the chip shortage and bolster national security with new domestic production capacity for the defense industry.

- Intel is the only major semiconductor manufacturer headquartered in the U.S. and put the “Silicon” in Silicon Valley
- Key element of the national priority to bring chip manufacturing back to the U.S.
 - 12% of semiconductors are manufactured in the U.S., compared to 37% in 1990, which poses substantial economic and security risks
 - The industry is heavily concentrated in SE Asia, particularly Taiwan

Statewide Impact

- Direct statewide impact
 - 140 Ohio suppliers
 - \$87 million statewide spend
- Ohio already boasts a large electronics manufacturing industry with many companies poised to evolve into the semiconductor ecosystem
- Opens Ohio to adjacent industries that are seeking a thriving technology and manufacturing ecosystem

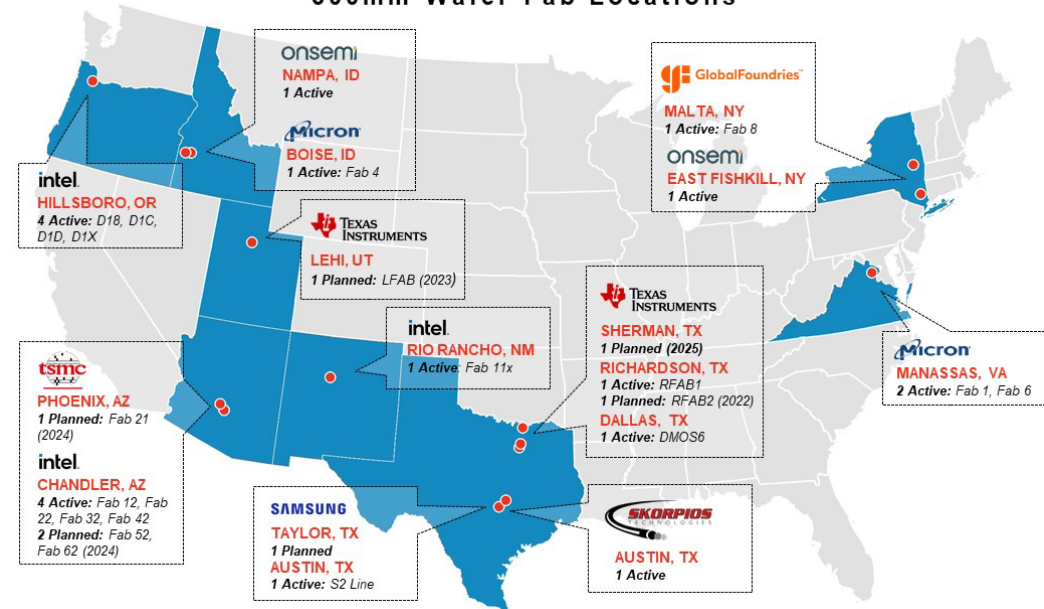


Silicon Heartland

- Places the Columbus Region and Ohio firmly on the global stage
- Helps future-proof our regional economy
 - Ohio and the Midwest will be viewed as a global center for modern manufacturing of the world's most critical technology
 - Industry is expected to double in size by 2030 to \$1 trillion
 - Will be the largest semiconductor manufacturing site in the world if fully developed

Semiconductor Facilities

300mm Wafer Fab Locations



In the News

intel.



Intel is building a \$20 billion computer chip facility in Ohio amid a global shortage



Intel's \$20 billion Ohio plant won't end the chip shortage overnight



Exclusive: Intel Reveals Plans for Massive New Ohio Factory, Fighting the Chip Shortage Stateside

THE WALL STREET JOURNAL

Intel to Invest at Least \$20 Billion in Ohio Chip-Making Facility

Company will make cutting-edge processors at new site near Columbus, creating around 3,000 permanent jobs



Intel's new facility near Columbus, Ohio, will produce cutting-edge processors for the next generation of Intel processors. (Photo: Intel)



Intel says Ohio "megafab" will begin making advanced chips in 2025
Intel will start with two fabs, but it has space for eight.



Intel's \$20 bln Ohio factory could become world's largest chip plant



As Big Tech stocks get slaughtered, Intel rises from the ashes

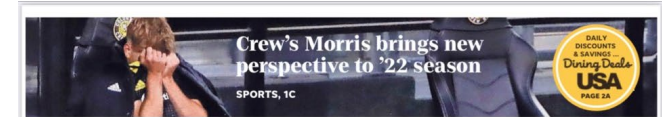


'This is just the beginning,' Biden says as Intel plans \$20 billion semiconductor complex in Ohio amid chip shortage

Bloomberg

Intel's \$20 Billion Ohio Chip Hub Will Be World's Largest

- Site could counterbalance production of chips from East Asia
- Project is the largest private-sector investment ever in Ohio



The Columbus Dispatch

SATURDAY, JANUARY 22, 2022 | DISPATCH.COM 150 YEARS SINCE 1871 PART OF THE USA TODAY NETWORK



Gov. Mike DeWine receives a plaque from Intel President and CEO Pat Gelsinger during a Friday announcement at Newark's Midland Theatre that Intel will be investing \$20 billion in building two computer chip factories in Jersey Township. (Photo: USA TODAY NETWORK)

INTEL IN OHIO: HOW THE DEAL WAS DONE

State negotiated with Intel for about 8 months

Mark Williams
Columbus Dispatch | USA TODAY NETWORK

Gov. Mike DeWine was enjoying the kind of chaotic Christmas morning at the Governor's Residence that most parents and grandparents experience. It was 10 a.m. and his children and grandchildren, many of whom had spent the night, were opening presents when DeWine's counselor, Laurel Dawson, handed the governor a letter.

It was from Intel CEO Pat Gelsinger and Senior Vice President Keyvan Eshajani, officially telling DeWine that the semiconductor company had picked Greater Columbus for what will be the biggest economic development project in state history.

See **TIMELINE**, Page 7A

Ohio won \$20B investment over 35-40 sites, CEO says

Mark Williams
Columbus Dispatch | USA TODAY NETWORK

Intel's promise to invest \$20 billion to build two semiconductor plants in Licking County could be just the start for what the Silicon Valley giant has in mind for Greater Columbus, the company's CEO told The Dispatch.

See **INVEST**, Page 8A

'Major win for Ohio,' leaders say about Intel chip plant

Aubrey Wright and Mark Williams
Columbus Dispatch | USA TODAY NETWORK

NEWARK - The celebration of Ohio's biggest economic development project in history stretched from Washington, D.C., to Newark on Friday.

See **CHIPS**, Page 8A

Workforce Impact

- Single largest event in Ohio for the attraction, development and retention of talent in decades
 - Will cement Ohio as a top talent magnet
 - Ohio's engineering schools and the ability to pull from the Big 10 were major attractors for this project
 - Intel has pledged \$100 million over the next decade to Ohio engineering colleges in partnership with the U.S. National Science Foundation to establish the Intel Ohio Center for Innovation



Intel Rankings



2022 BEST PLACES TO WORK

GLASSDOOR



2022 AMERICA'S MOST RESPONSIBLE COMPANIES

NEWSWEEK



2021 TOP 20 FORTUNE 500 COMPANIES ON DIVERSITY AND INCLUSION

FORTUNE



2021 WORLD'S BEST EMPLOYERS

FORBES



2021 TOP VETERAN-FRIENDLY COMPANIES

U.S. VETERANS MAGAZINE



2021 CORPORATE EQUALITY INDEX

HUMAN RIGHTS CAMPAIGN FOUNDATION



2020 WORLD'S MOST VALUABLE BRANDS

FORBES

Status Update

- CHIPS Act
- Pre-construction activities underway
- Permitting
- Phase 1 commercial production will start in 2025



Status Update

- Supply chain
 - One Columbus and JobsOhio starting to work with fellow travelers and suppliers
 - Outreach to existing industry that are already in the supply chain or could be
 - Companies interested in working with Intel can register on the Intel Ohio website

Status Update

- Workforce development
 - Deploy multi-faceted national attraction campaign for both entry-level and experienced talent.
 - Increase engagement with workforce partners to drive awareness of the Company within underrepresented minorities, military, and female populations.
 - Work with local technical schools/institutions on certificate program to upskill and reskill talent that is underemployed or from underrepresented communities.
 - Develop a strategy to prepare the emerging K-12 talent pipeline, including influencing and expanding STEM education, company and industry engagement, teacher externships, as well as STEM-focused camps and internships.

Thank you



REGIONAL UPDATES

Kerstin Carr, *Chief Regional Strategy Officer, MORPC*



MID-OHIO REGIONAL
MORPC
PLANNING COMMISSION



REGIONAL UPDATES: MOBILITY

Nick Gill, *Transportation Study Director, MORPC*

Matt Hill, *Technical Study Director, Licking Co. Planning & Development*



MID-OHIO REGIONAL
MORPC
PLANNING COMMISSION

Roadway Activities

ODOT for Phase 1

- SR 161 from I-270 to US 62 – Additional lane each direction
- SR 161/ Mink Interchange – Reconfiguring Mink St. between ramps into 5 lane configuration

Primary New Albany projects for Phase 1

- Jug Street/new road – Jug Street 3 lanes from Beech Rd to Harrison Rd then new road north into Intel site
 - Primarily for construction traffic
- Mink St – widen to 5 lanes from SR 161 to Green Chapel Rd
 - To be main route for Intel employees



MORPC

Regional Transportation Planning Activities

MORPC

- Partnering with COTA on County Connections to provide transit service from COTA service area to adjacent counties
- LinkUs Initiative
- Metropolitan Transportation Plan Update
 - To be adopted in 2024
 - Major work will begin later this year and throughout 2023

LCATS

- Thoroughfare plan for unincorporated areas and City of Newark
- Johnstown Mobility app and multimodal mobility hub
- Licking County Commissioners funding a county wide water/sewer analysis to identify issues and needs
- Transportation Plan Update
 - To be adopted in 2024
 - Process of hiring consultant to perform majority of work



MORPC

REGIONAL UPDATES: HOUSING

Jennifer Noll, *Associate Director, Community Development, MORPC*



MID-OHIO REGIONAL
MORPC
PLANNING COMMISSION

MODELING POPULATION CHANGES

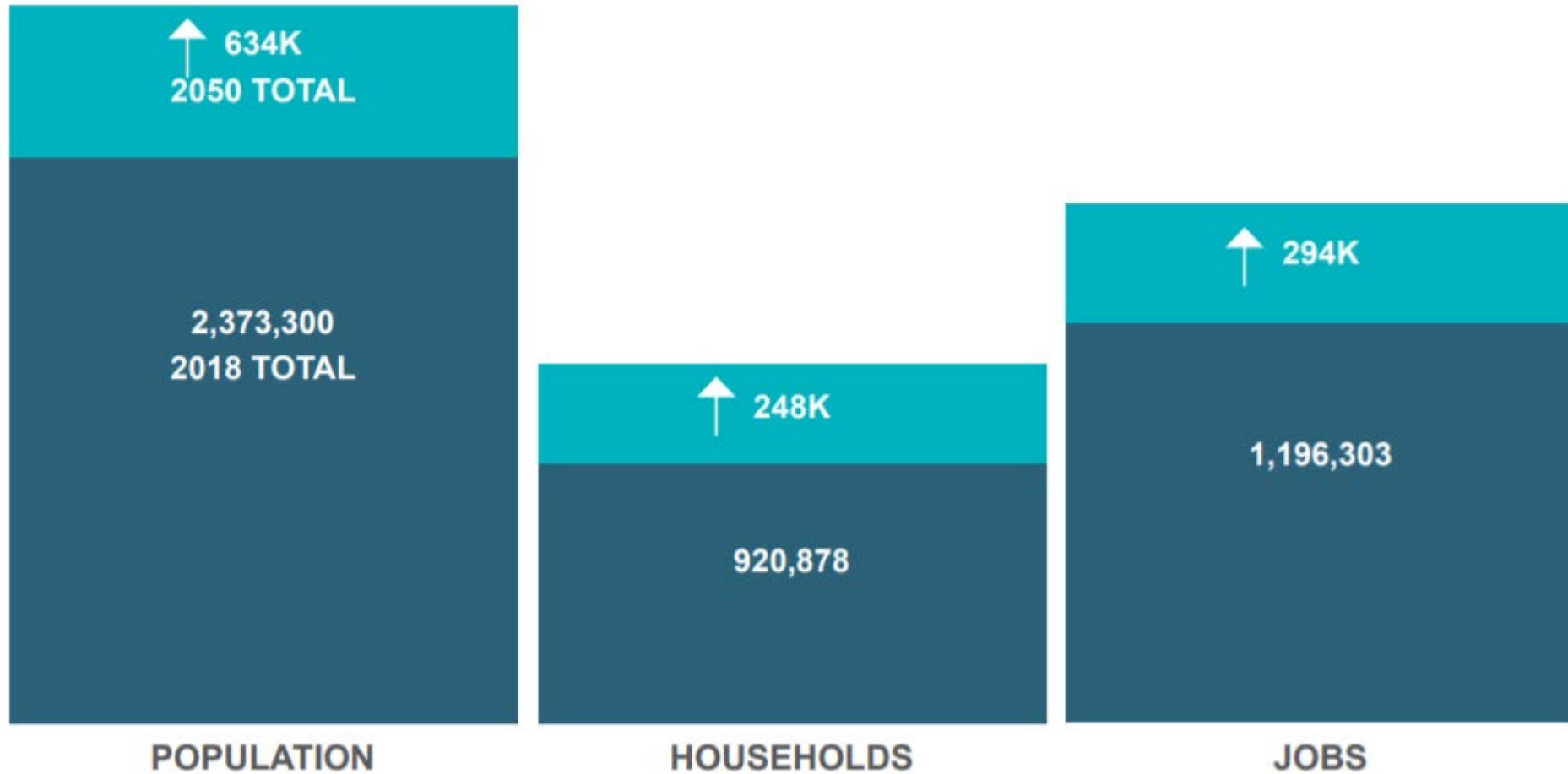


- Model accounts for long-term stable trends over time *and* irregular short-term changes
- Central Ohio's growth is a result of many factors – each is an important part of the region's success



STILL ON TRACK TO 3 MILLION PEOPLE BY 2050

2018–2050 Projected Population Growth, 15-County Region



MORPC

CORE HOUSING ISSUES & PRIORITY ACTIONS



Increased competition
for homes



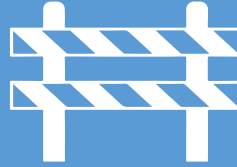
Adopt “Green Tape”
development review



Limited supply of homes
priced for low-income
households



Create a state housing
tax credit



Barriers limiting access
to homes



Enact source-of-income
protection laws



Demand for more diverse
housing stock



Pilot diverse lower-cost
housing products



Housing instability
among Central Ohioans



Tenant-based rental
assistance

MORE OPTIONS = MORE RESILIENT

We want and need more:



Homes



Walkability



Amenities



Mobility



Green Space



MORPC

MORE OPTIONS = POSITIVE IMPACTS



TRANSPORTATION
VEHICLE
MILES TRAVELED



HOUSEHOLD
COSTS



LAND
CONSUMPTION



TAX
REVENUES



TRANSPORTATION
MODE SHARE



GREENHOUSE
GAS EMISSIONS



LOCAL
INFRASTRUCTURE
AND SERVICES



TRANSPORTATION
ACCESS



REGIONAL UPDATES: SUSTAINABILITY

Brandi Whetstone, *Sustainability Officer, MORPC*



MID-OHIO REGIONAL
MORPC
PLANNING COMMISSION

REGIONAL SUSTAINABILITY AGENDA



MORPC

GOAL ONE



Improve air quality and reduce climate change impacts to protect public health and the environment.

GOAL TWO



Protect and preserve natural resources to support a healthy and resilient region.

GOAL THREE



Improve quality of life for all residents by creating sustainable and equitable communities.

GOAL FOUR



Promote robust, inclusive, and sustainable growth and development.

morpc.org/sustainabilityagenda

PROGRAM HIGHLIGHTS: ENERGY



MORPC

Advancing clean, sustainable, and resilient energy solutions

bfiliatraut@morpc.org



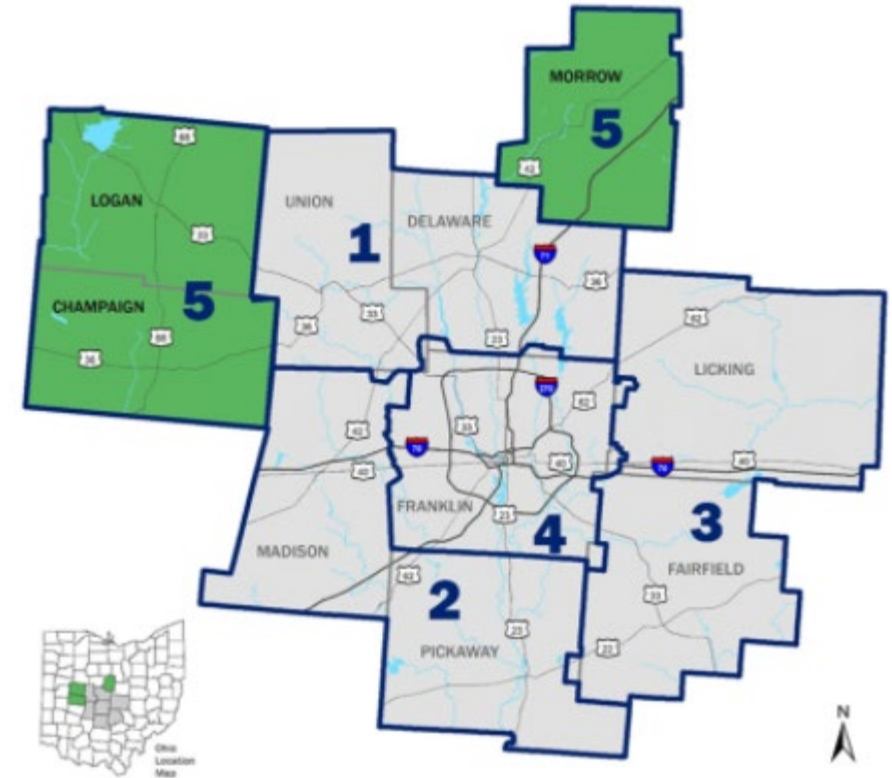
PROGRAM HIGHLIGHTS: WATER RESOURCES



MORPC

Ensure clean and abundant water resources for our growing region

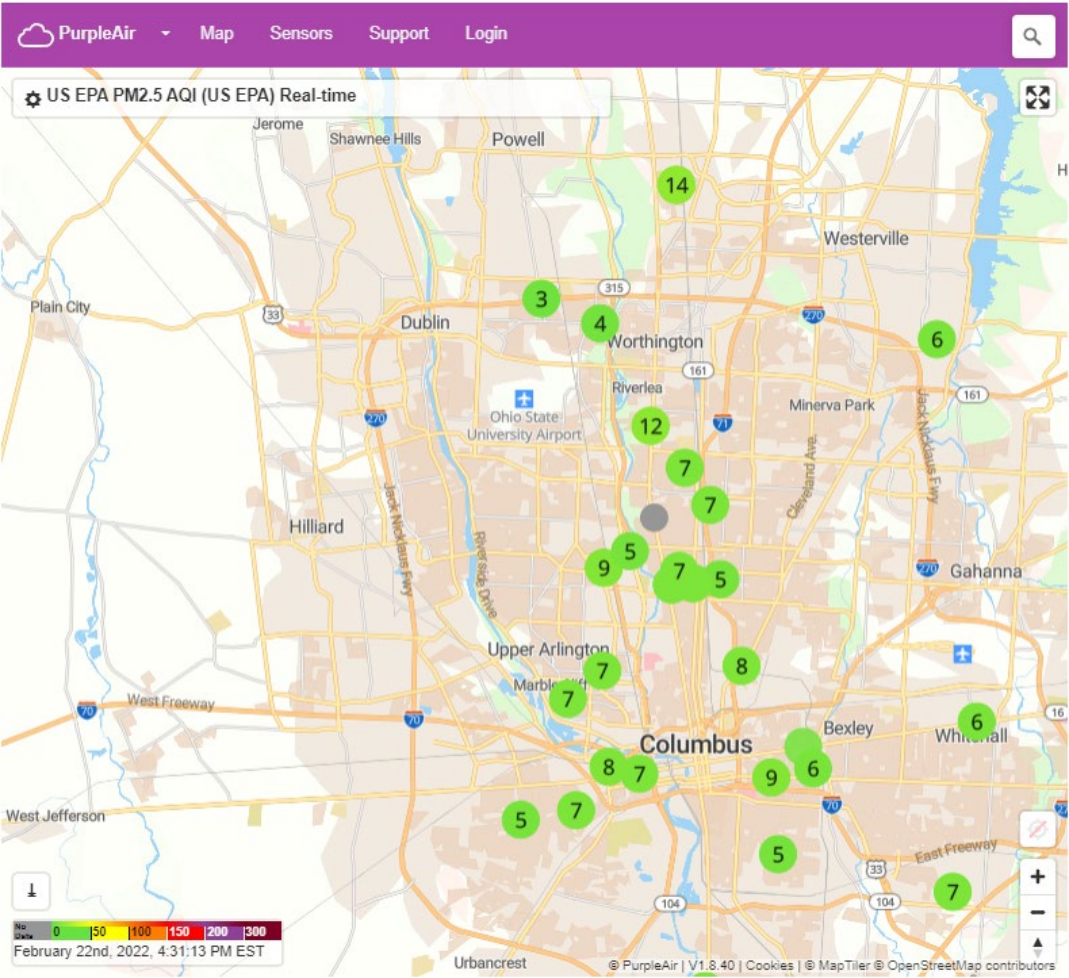
eteye@morpc.org



PROGRAM HIGHLIGHTS: AIR QUALITY



Air quality forecasts, alerts, and monitoring
morpc.org/airquality



SUSTAINABLE2050



Central Ohio Communities
Working Toward a Better Future

**35 members making a
collective impact on quality of
life in central Ohio!**

Program benefits-

- Peer exchange
- Recognition
- Technical assistance

LISTENING SESSION

Thea Ewing, *Chief Regional Development Officer, MORPC*



MID-OHIO REGIONAL
MORPC
PLANNING COMMISSION

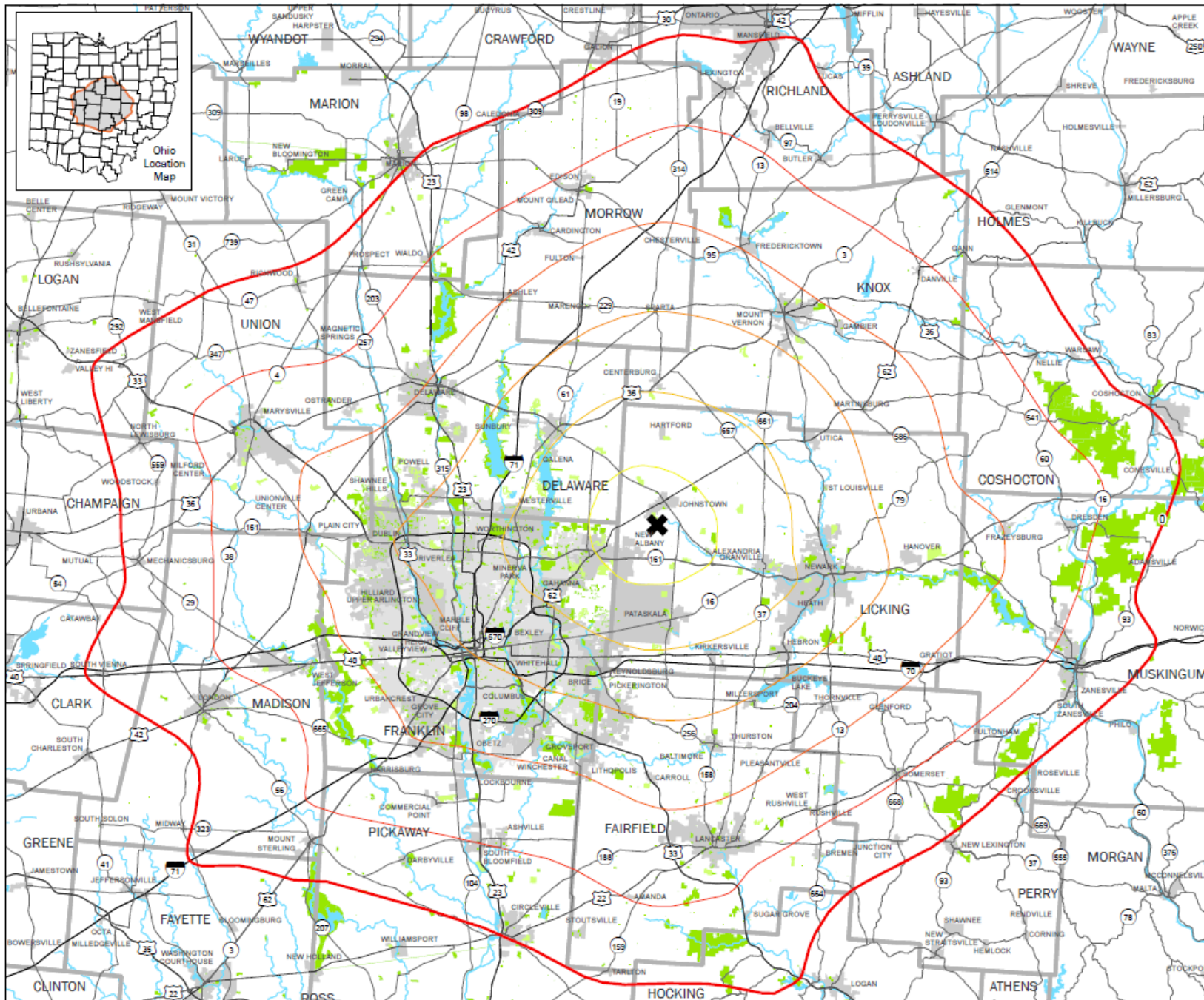


ON THE MAP

Kerstin Carr, *Chief Regional Strategy Officer, MORPC*



MID-OHIO REGIONAL
MORPC
PLANNING COMMISSION



Intel Site Driving Times

✕ Intel Site

Travel Time in minutes

60

50

40

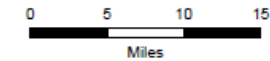
30

20

10

Park/Open Space

Note:
Travel assumed by car.
Travel times are approximate from Intel site out at 5pm.
Buffers generated using ESRI Network.



The information shown on this map is compiled from various sources made available to us which we believe to be reliable.
N:\ArcGIS\REQUESTS\Internal\Intel_Travel_Times\IntelBase.aprx
2/23/2022

TOPICS OF INTEREST



MORPC

Which impacts concern you the most?

1. Changing Community Character
2. Energy/Energy Consumption
3. Housing (Where/How many/Type)
4. Population Growth
5. Preserving Green Space
6. Quality of Life
7. Schools
8. Traffic/Roads
9. Unanticipated Impacts on My Community
10. Water/Water Consumption
11. Workforce Mobility/Transportation (not traffic/roads)

Which opportunities interest you the most?

1. Career/Workforce Preparation (partnering with schools)
2. Economic Development
3. Focus on Tech Industries
4. High-Wage Jobs
5. Housing Investments
6. Increased Tax Revenue
7. Innovation
8. Multimodal Transportation Infrastructure Investments
9. Strengthened Regional Collaboration
10. Strengthened State Collaboration
11. Sustainability Investments