



MID-OHIO REGIONAL  
**MORPC**  
PLANNING COMMISSION

111 Liberty Street, Suite 100  
Columbus, Ohio 43215  
morpc.org

T. 614. 228.2663  
TTY. 1.800.750.0750  
info@morpc.org

**NOTICE OF A MEETING**

**CENTRAL OHIO GREENWAYS TRAIL DEVELOPMENT & PARTNERSHIPS  
JOINT WORKING GROUP MEETING  
MID-OHIO REGIONAL PLANNING COMMISSION**

***REMOTE MEETING***

**April 20, 2022  
9:30 am to 11:30 am**

**AGENDA**

- 1. Welcome** – *Jennifer Noll, MORPC*
- 2. Community Meetings** – *Chair Mike Andrako & Jonathan Miller, MORPC*
- 3. Funding Updates**
- 4. MORPC Technical Assistance Project Review** – *Lauren Cardoni, MORPC*
  - a. Dublin
  - b. Columbus
  - c. Sunbury
  - d. Metro Parks
- 5. Other Business**
  - a. Trail Count Pilot Project

Mid-Ohio Regional Planning Commission  
*Remote Meeting*

Central Ohio Greenways Trail Development & Partnerships  
Joint Working Group Meeting

April 20, 2022

---

Members Present

Mike Andrako, Franklin County Engineer's  
Office  
Stacey Boumis, City of Obetz  
Kacey Brankamp, Capital Crossroads Special  
Improvement District  
Nina Duerk, Strand Associates  
Bertie Fields  
Terry Fischer, Bike Buckeye Lake  
Justin Goodwin, City of Columbus  
Beth Hugh, Korda Nemeth Engineering, Inc.  
Tatiana Parfenova, Metro Parks  
Letty Schamp, City of Hilliard  
David Shipps, Toole Design  
Brad Westall, City of Columbus

Staff Present

Lauren Cardoni  
John Gardocki  
Lynn Kaufman  
Dina Lopez  
Lexi Petrella  
Jasmine Walker

Public Present

Ariunaa Bayanjargal  
Emma Kogge, City of Columbus  
Alex Rozanski, Orange Twp. (Delaware  
County)

# RAISE Grant Application

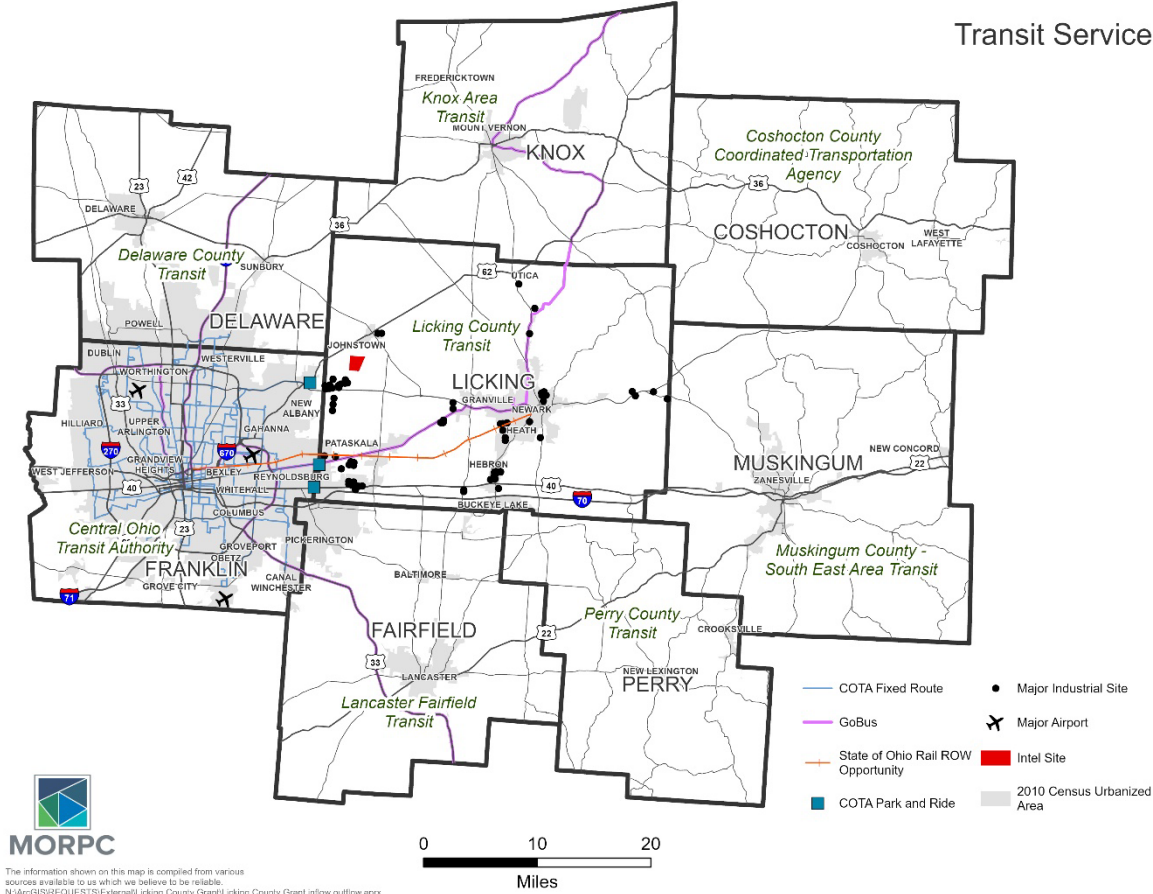
Strategic Plan for a Silicon Heartland Mobility  
Start Up



MID-OHIO REGIONAL  
**MORPC**  
PLANNING COMMISSION

# CONTEXT SETTING

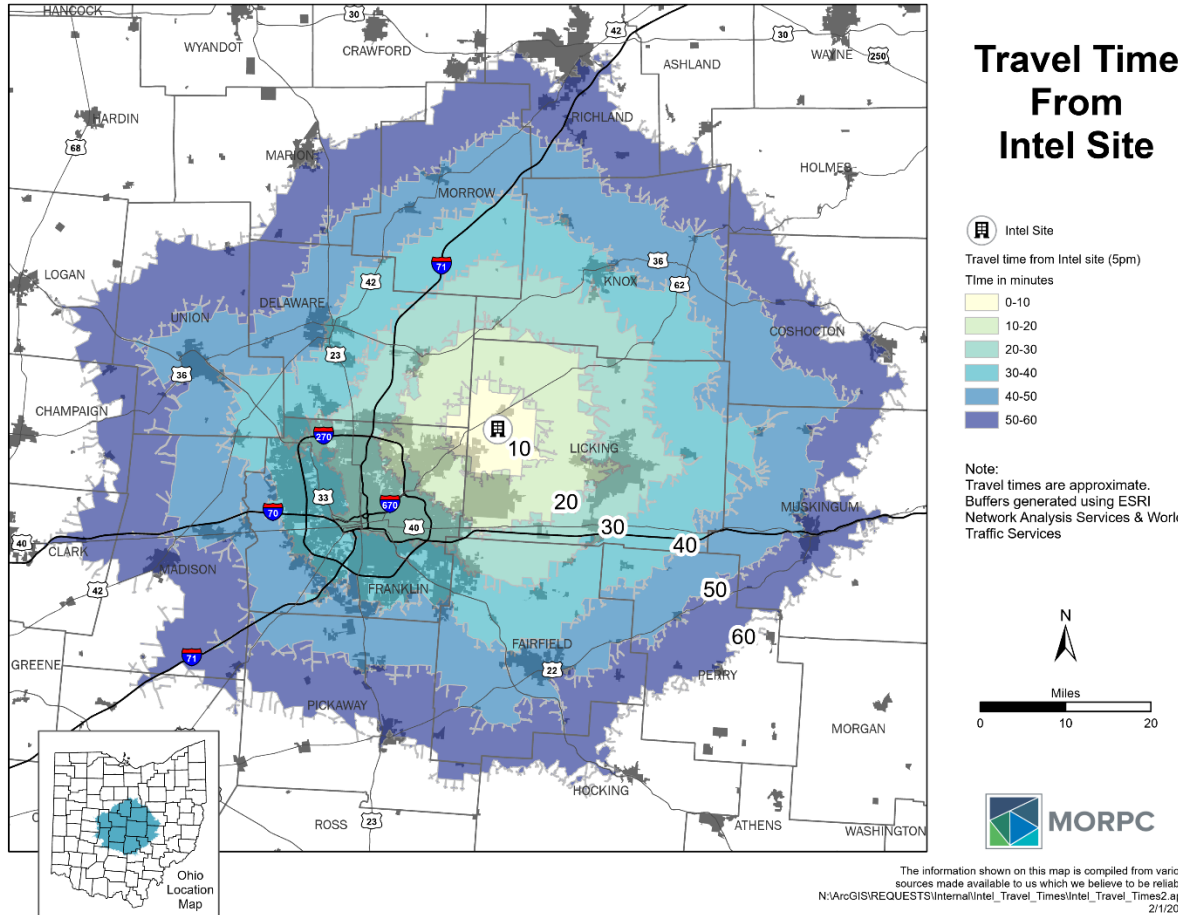
Transit Service



**MORPC**

The information shown on this map is compiled from various sources available to us which we believe to be reliable.  
N:\ArcGIS\REQUESTS\Internal\Licking County Grant\Licking County Grant inflow outflow.aprx

Travel Time From Intel Site

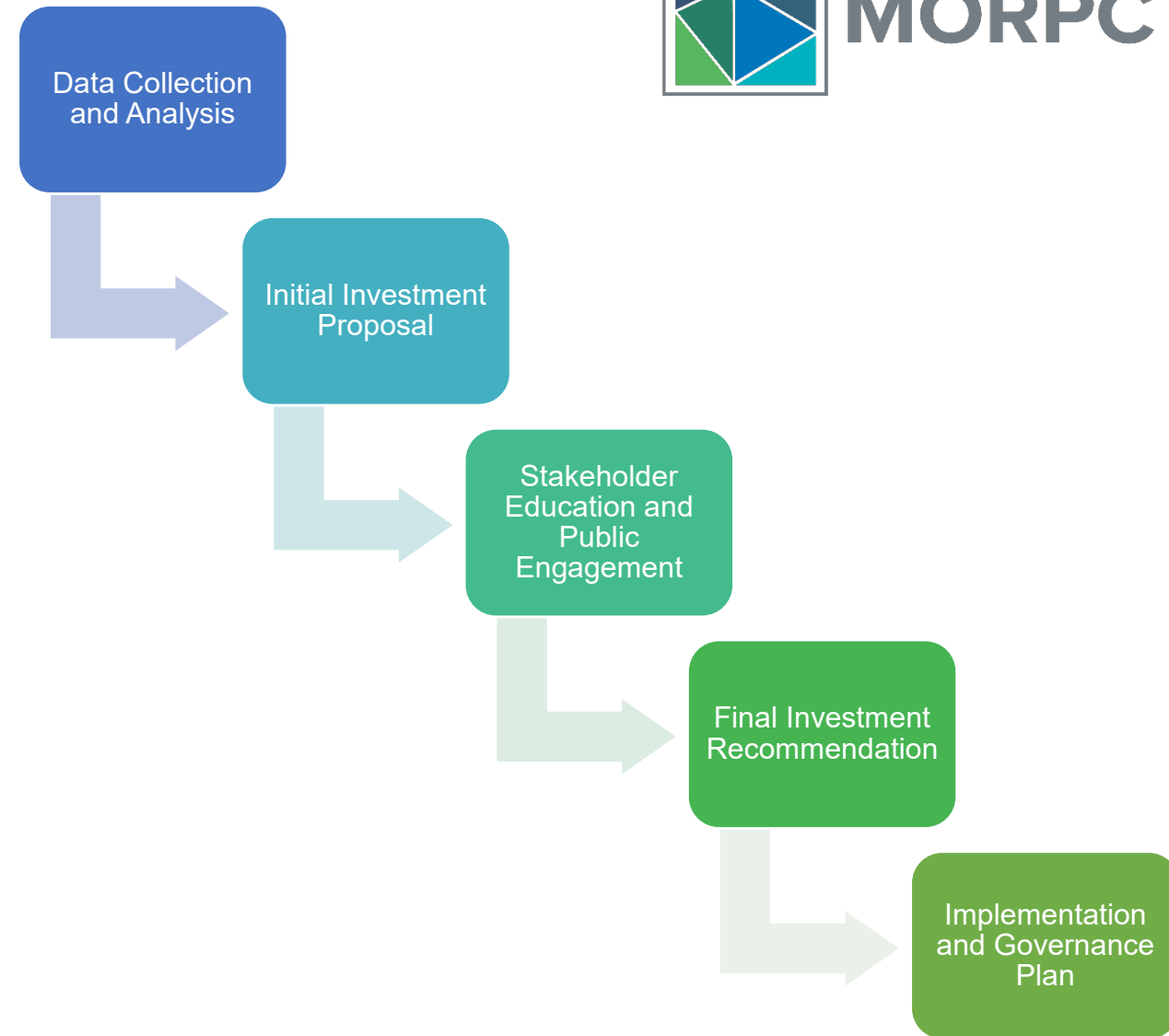


# PROJECT DESCRIPTION

- Applicant: Licking County Area Transportation Study (LCATS)
- Area of Focus: Licking County
- Area of Study: Licking and its surrounding counties
- Strategic Plan
  - Identify components for and guide the implementation of an efficient, connected, safe, sustainable, and equitable mobility network
  - Main intentions:
    - Encourage economic opportunity
    - Support climate and sustainability goals
  - Planning process:
    - Define the need with data
    - Clarify the vision with engagement
    - Guide collaborative funding and implementation, and sustainability of mobility systems, technologies, and programs



MORPC



# PROJECT DESCRIPTION

- Prioritization of research and proposed investments of mobility components:
  - Non-motorized and traffic safety
    - Notable corridors and crash types
    - Locations near Intel site
  - Climate impact
    - Air quality/ mode shift
    - Alternative energy
  - Quality of life
    - Connecting historically underserved communities and locations of persistent poverty
    - Communities with low car ownership
  - Community and Regional Connectivity
    - Major employment and community resources
    - Focus on transit and active transportation



MORPC

## SILICON HEARTLAND MOBILITY STARTUP STRATEGIC PLAN

**RAISE Discretionary Grant Application**

Submitted April 14, 2022



# PROJECT MANAGEMENT AND TIMELINE



MORPC

- Scope of work finalized by LCATS
- Project principles
  - LCATS
  - Licking County Transit
  - Ohio Department of Transportation (ODOT)
  - Mid-Ohio Regional Planning Commission (MORPC)
  - Central Ohio Transit Authority (COTA)
  - Delaware County Transit (DCT)
- Steering committee including other county representatives, transit organizations, Intel representatives, and economic development agencies



MORPC

# DETAILED STATEMENT OF WORK: *SCOPE AND DESCRIPTION*

- Strategic planning study to identify a suite of mobility and technology solutions
- Respond to growing need for equitable and sustainable workforce transportation options
- Requirement of examining:
  - Current workforce mobility trends
  - Existing transportation resources
  - Projected implications of the newly announced Intel manufacturing campus
  - Stakeholder education to build support for multimodal investment
  - Public engagement to field the needs of all residents
- The outcome of the strategic plan:
  - Final proposal of mobility and technology investments that respond to the current and projected equity and sustainability gaps
  - Implementation strengthened by innovative funding concepts, a cross-sector partnership structure, and sustainable governance plan.





# DETAILED STATEMENT OF WORK: *SCOPE OF SERVICES*

## DATA COLLECTION AND ANALYSIS

The Consultant will perform extensive data collection and analysis to evaluate the use of the existing transportation network and its implications next to projected data.

- Deliverables
  - Report outlining understanding of infrastructure and communities of opportunity for climate impact, safety, and equity
  - Assessment of the relationship between the existing built environment, mobility programs, and transit services and the following:
    - Employment, education, and healthcare opportunity
    - Persistent poverty tracks and historically disadvantaged communities
    - Severe and fatal crash data for all modes
    - Infrastructure maintenance
    - Air quality/emissions
    - Active transportation use
    - Single occupancy vehicle trips
    - Technology and internet access
    - Regional connectivity focused on the area of study
  - Identification of relevant strategies outlined in previous strategic planning initiatives

# DETAILED STATEMENT OF WORK: *SCOPE OF SERVICES*

## INITIAL INVESTMENT PROPOSAL

Proposal of mobility systems, technologies, and programs that together respond to gaps in equitable transportation access provide a viable alternative to SOV travel and support climate goals, as well as contribute to a multimodal mobility network.

This task will propose individual components to a multimodal mobility network, warranted by the data and analysis work, for consideration in the stakeholder education and public involvement deliverable.

- Deliverables
  - Executive summary of Initial Investment Proposal including all components that result in the Silicon Heartland Mobility Startup
  - Cost benefit analysis of investment as a whole
  - Definition, use case explanation, and specific context of each component
  - Evaluation of initial investment proposal based on these merit criteria:
    - Safety
    - Environmental Sustainability
    - Quality of Life
    - Mobility and Community Connectivity
    - to efficiency in multimodal transportation options proposed.
    - Economic Competitiveness
    - State of Good Repair
    - Partnership and Collaboration
    - Innovation



MORPC

# DETAILED STATEMENT OF WORK: *SCOPE OF SERVICES*

## STAKEHOLDER EDUCATION AND PUBLIC ENGAGEMENT

The Consultant will be responsible for facilitating public engagement with community public and private stakeholders concurrent to the other strategic plan tasks to ensure continued transparency and input is a priority throughout the strategic plan's development.

- Deliverables
  - Stakeholder analysis for identification of key representatives, including proposed project champions from the private and public sectors
  - Assessment plan for facilitation of stakeholder discussions and public engagement for review and approval.
  - Reporting on engagement to historically disadvantaged communities, neighborhoods in persistent poverty tracks, and specific engagement with other disadvantaged populations.
  - Presentation and report with back-up information for each discussion. The Consultant shall provide a slide presentation and a written report that summarizes the information from the facilitation effort.

# DETAILED STATEMENT OF WORK: *SCOPE OF SERVICES*



MORPC

## FINAL RECCOMENDATION

The Consultant will integrate all information gathered during the previous tasks and present the final mobility investments that will together result in the Silicon Heartland Mobility Startup.

- Deliverables:
  - Executive Summary
  - Analysis framework and findings from the data collection and analysis task
  - Findings and recommendations from public and stakeholder engagement initiatives
  - Final recommendation, developed with the initial investment proposal and changes made from stakeholder and public input
  - Mapping of transportation network calling out improved multimodal connections and economic opportunity between urban, rural, and underserved communities
  - Cost Benefit Analysis
  - Final implication evaluation based on the key criteria

# DETAILED STATEMENT OF WORK: *SCOPE OF SERVICES*



MORPC

## IMPLEMENTATION AND GOVERNANCE PLAN

The consultant will present a final implementation plan to guide investments, construction, and governance of the system.

This implementation plan will be developed to ensure feasibility, viability, and long-term project success.

### Deliverables:

- Project timeline to full implementation
- Implementation plan across all modes, technologies, and/or programs
- Mobility investment plan and cost estimation
- Prioritized implementation plan in consideration of:
- Reactionary to main Intel facility
- Feasibility study examining environmental and investment costs
- Innovative finance concepts
- Environmental planning work for physical investments
- NEPA, Clean Air Act, and other environmental regulatory compliance for proactive response to environmental impacts of proposed investments
- Public and stakeholder engagement and marketing plan pre- and post-implementation
- Public-private partnership structure
- Long-term multijurisdictional governance structure, bylaws, and organizational plan

# LEXI PETRELLA

*Senior Planner*

Mid-Ohio Regional Planning Commission

**T:** 614.233.4132

[apetrella@morpc.org](mailto:apetrella@morpc.org)

111 Liberty Street, Suite 100  
Columbus, OH 43215



MID-OHIO REGIONAL  
**MORPC**  
PLANNING COMMISSION

# Trail Count Program – Columbus Pilot Project

April 2022 Update



**MORPC**  
MID-OHIO REGIONAL PLANNING COMMISSION

# Trail Monitoring Equipment Upgrades



**MORPC**  
MID-OHIO REGIONAL PLANNING COMMISSION



## Multi-Use Counters

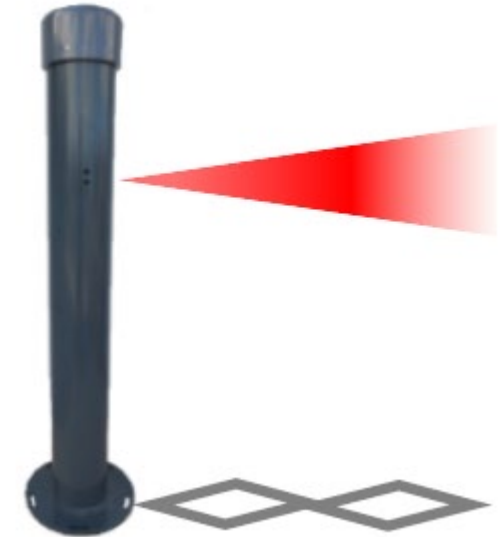
MULTI in an Urban Post

*Discretely measures cyclist and pedestrian usage in an urban environment*

- Differentiates user type
- Records direction of travel
- 1 – 2 year battery life
- 11 months of data memory
- \$5,700 per unit
  - Up to 15' range
  - Direction detection
  - (not incl. installation)

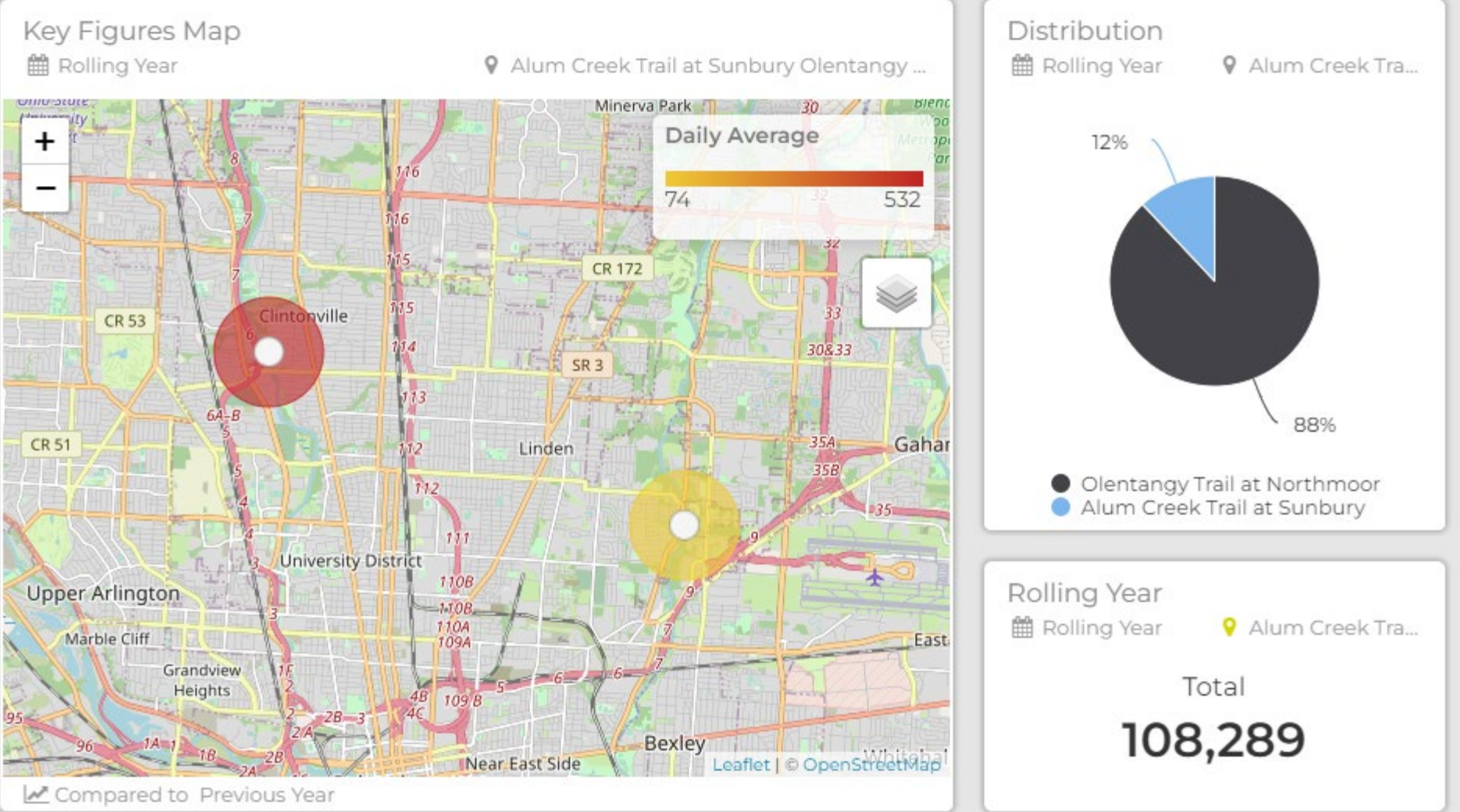


*Cyclists and pedestrians are counted and differentiated on a shared use path*





# Regional Dashboard – Columbus Pilot Data

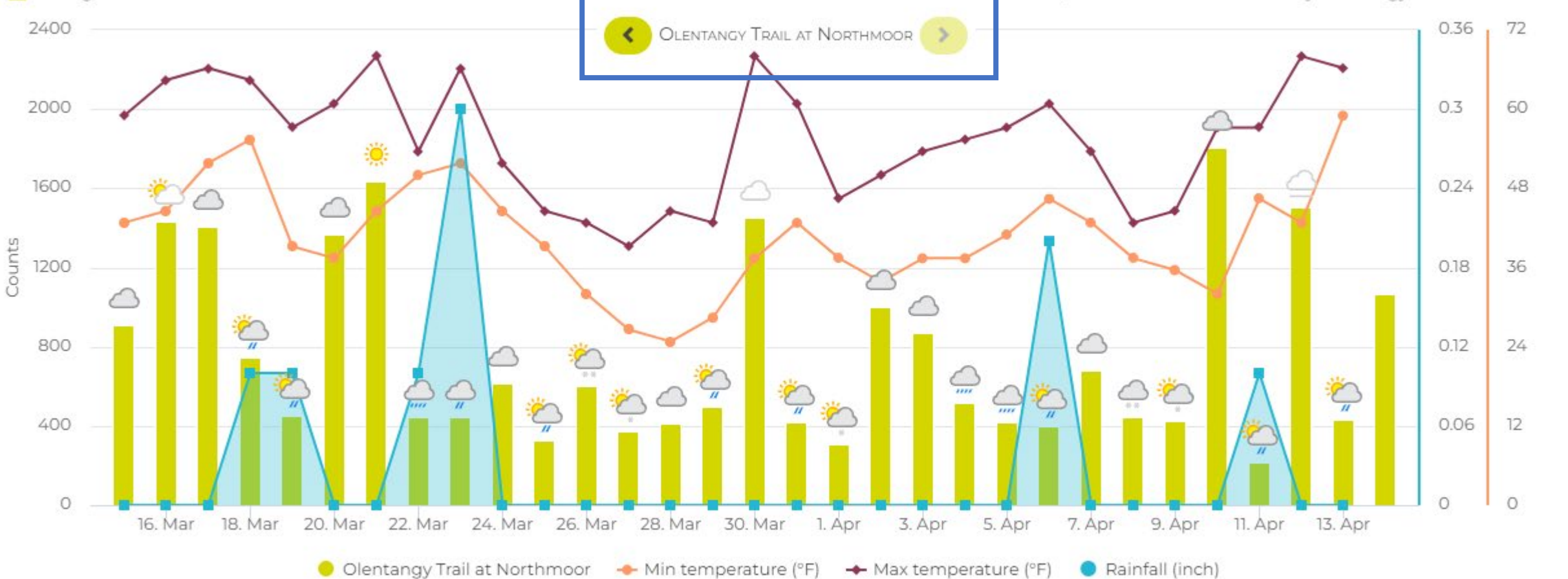


# Regional Dashboard – Columbus Pilot Data

Trail Traffic and Weather - Bike and Ped

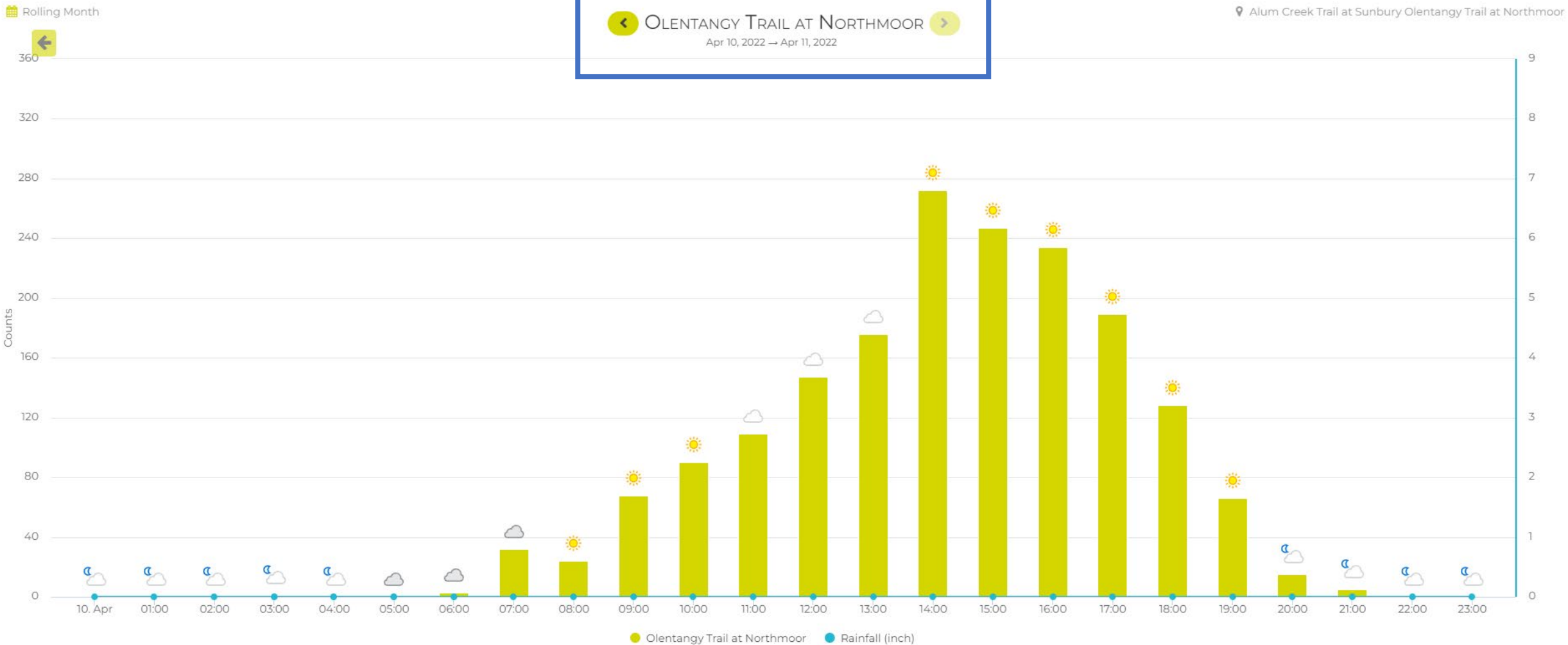
Rolling Month

Alum Creek Trail at Sunbury Olentangy Trail at Northmoor



# Regional Dashboard – Columbus Pilot Data

## Trail Traffic and Weather - Bike and Ped



# Regional Dashboard – Columbus Pilot Data



**MORPC**  
MID-OHIO REGIONAL PLANNING COMMISSION

## Key Figures Summary

Rolling Year

Alum Creek Trail at Sunbury Olentangy Trail at Northmoor Total Pedestrian Cyclist Direction

Site	Total	Daily Average	Peak Day	Peak Count
Olentangy Trail at Northmoor	95,287	532	Sat Mar 5, 2022	2,528
Olentangy Trail at Northmoor Pedestrian	59,648	333	Sat Mar 5, 2022	1,096
Olentangy Trail at Northmoor IN	48,396	270	Sat Mar 5, 2022	1,268
Olentangy Trail at Northmoor OUT	46,891	262	Sat Mar 5, 2022	1,260
Olentangy Trail at Northmoor Cyclist	35,639	199	Sat Mar 5, 2022	1,432
Alum Creek Trail at Sunbury	13,002	74	Sat Mar 5, 2022	376
Alum Creek Trail at Sunbury Pedestrian	7,495	43	Sat Feb 12, 2022	353
Alum Creek Trail at Sunbury IN	6,654	38	Sat Mar 5, 2022	192
Alum Creek Trail at Sunbury OUT	6,348	36	Sat Mar 5, 2022	184
Alum Creek Trail at Sunbury Cyclist	5,507	31	Sat Mar 5, 2022	272

Compared to Previous Year

Pulled: Friday 4/15



# Columbus Pilot – Data Validation



**MORPC**  
MID-OHIO REGIONAL PLANNING COMMISSION

Time	EQUIPMENT COUNTS				MANUAL COUNTS							NOTES
	Urban Post Unit		Temp Units		Bike	Ped	Slow Ped	Jogger	Scooter	Other	TOTAL	
	Count Number	Count	Display Number	Out								
START	27132	25265	14351	14195								Bike traveling NB Ped SB 2 Bikes SB
3:19		2		1								
3:21		/ / / / / / / / / /	/ / / / / / / / / /	/ / / / / / / / / /								
3:22		/ / / / / / / / / /	/ / / / / / / / / /	/ / / / / / / / / /								
3:23	4		1	1								
3:24												
3:25												
3:26												
3:27												
3:28	2		1	1								
3:29												
3:30												
3:31			1	1	2							
3:32												
3:33												
TOTAL	27143	25271	14356	14704								2 joggers SBS
3:34												
3:35	1			1								
3:36												
3:37		2	1	1	3							
3:38				2	2							
3:39	2		1	1	2							
3:40												
3:41	1				1							
TOTAL	147	278	362	716								
42	2											
TOTAL												

NW

PED BIKE

Bike In Out

group of joggers

crossed @ same time



# THANK YOU!

**LAUREN CARDONI**

*Principal Planner*

**Mid-Ohio Regional Planning Commission**

**T: 614.233.4128**

**[lcardon@morpc.org](mailto:lcardon@morpc.org)**

