

## **I. Traffic Impact of Trains Stopped on Tracks Blocking the Crossing**



Traffic stopped on Williams Road west of the at-grade crossings because a train stopped on tracks and blocking the at-grade rail crossings.



Multiple vehicles executing illegal U-turns to avoid stopped traffic on Williams Road west of the separated rail crossing because a train stopped on tracks and blocking the at-grade rail crossings.





Illegal U-turn to avoid traffic backing up on Groveport Road north of Williams Road, due to the traffic stoppage on Williams Road west of the separated rail crossing because a train stopped on tracks and blocking the at-grade rail crossings.



Traffic backing up on Groveport Road north of Williams Road, due to the traffic stoppage on Williams Road west of the separated rail crossing because a train stopped on tracks and blocking the at-grade rail crossings.



## II. Williams Road Corridor Drone Footage



Intersection of Williams Road at SR-317, looking east. The US-33 Interchange on SR-317 is visible just north of the intersection.



Intersection of Williams Road at SR-317, looking west.





Williams Road, looking west. Commercial properties on both north and south side of road.



Williams Road, looking west. Commercial properties on both north and south side of road.





Williams Road, looking west. Residential properties on north, commercial properties on south side of road.



Williams Road, looking west. Residential on north and south side of road.





Williams Road, looking west. Residential on north side, Three Creeks Metro Park on south side of road.



Williams Road, looking west. Bridge over Big Walnut Creek, maintained by the Franklin County Engineer. Three Creeks Metro Park is on south side of road.





Looking north at bridge over Big Walnut Creek. Bridge is maintained by the Franklin County Engineer. Three Creeks Metro Park is on south side of road.

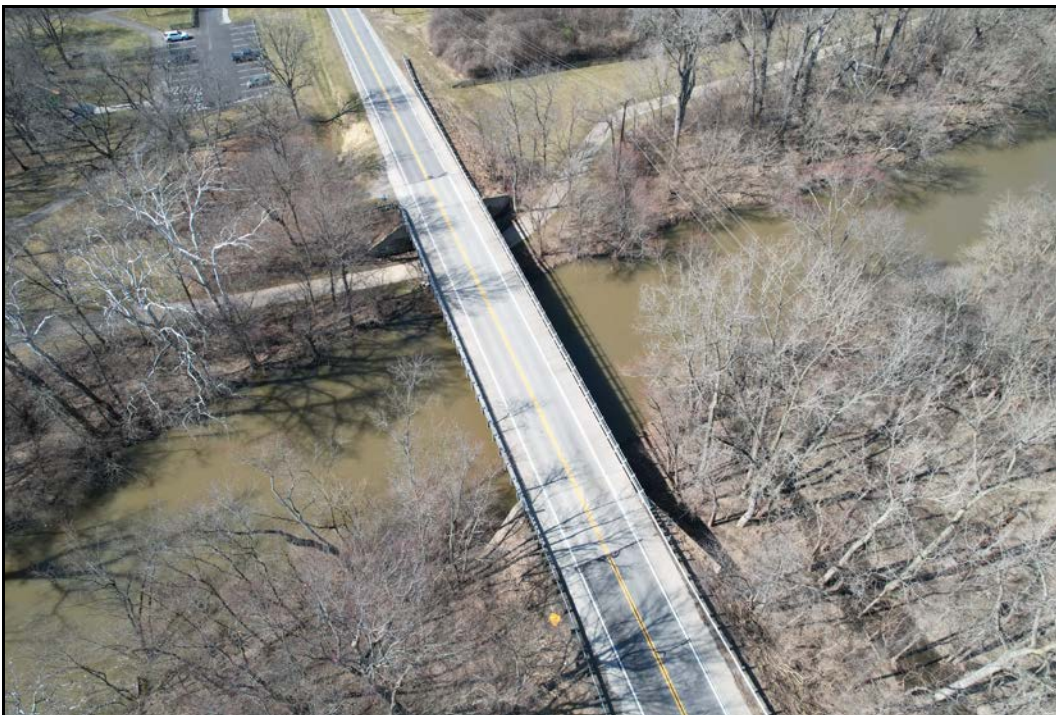


Williams Road, looking west. I-270 just visible at top of the picture. The I-270 bridge is maintained by ODOT. Three Creeks Metro Park is on south side of road.





Williams Road, looking west. I-270 just visible at top of the picture. The I-270 bridge is maintained by ODOT. Three Creeks Metro Park is on south side of road.



Williams Road, looking west. Bridge over Alum Creek, maintained by Franklin County Engineer. Alum Creek Trail visible on west bank. Three Creeks Metro Park is on north side of road.





Looking north at Alum Creek bridge. Bridge is maintained by the Franklin County Engineer. Three Creeks Metro Park is on north and south side of road.



Williams Road, looking west. Moving beyond Three Creeks Metro Park and back into residential land uses on either side.





Williams Road, looking west. Intersection with Spangler Road is towards center of image. Residential land use on either side.



Williams Road, looking west. Approaching the intersection with Alum Creek Drive (towards top of picture).





Williams Road, looking west. At the intersection with Alum Creek Drive.



Williams Road, looking west. Residential on north, commercial on south side of Williams Road.





Williams Road, looking west. Mixture of residential, commercial, and agricultural land uses.



Williams Road, looking west. Mixture of residential, commercial, and agricultural land uses.





Williams Road, looking west. The two at-grade rail crossings are visible towards the top of the picture. ODW Logistics is on the north side of Williams Road, towards the top, and XPO Logistics on the south side of Williams Road, towards the top.



Williams Road, looking west. The two at-grade rail crossings are in the center, with the start of the switching tracks at NS' Watkins Yard's just visible to the north. ODW Logistics is on the north side and XPO Logistics on the south side of Williams Road.





Williams Road, looking west. Mixture of land uses.

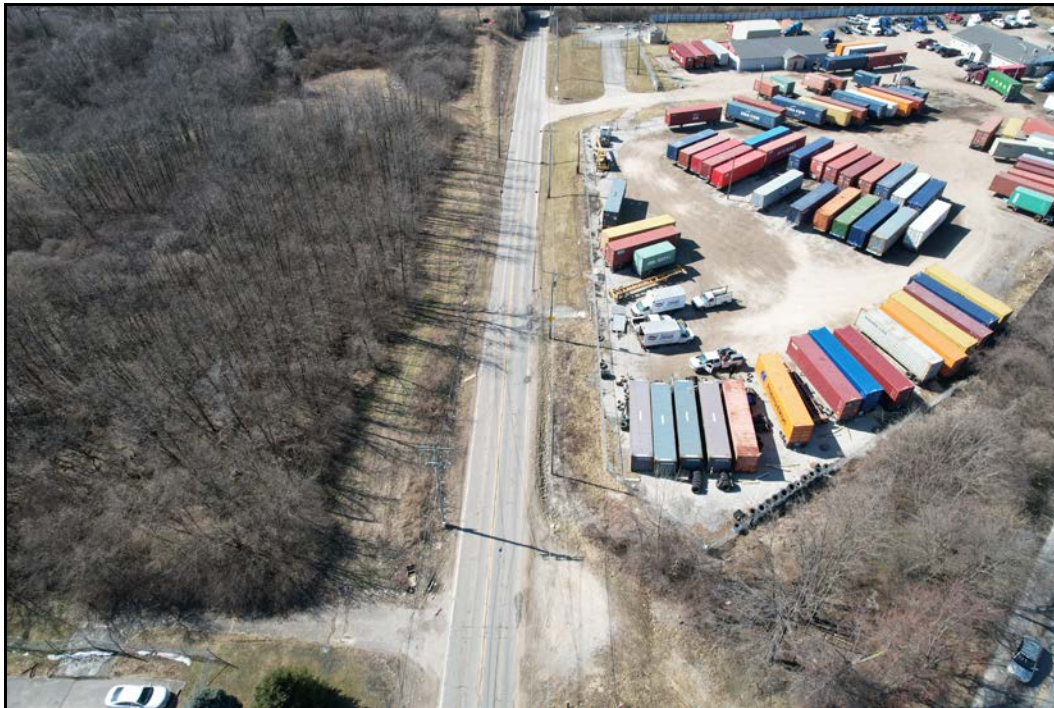


Williams Road, looking west, at the intersection of Williams Road at Groveport Road.





Intersection of Williams Road and Groveport Road, looking north.



Williams Road, looking west.





Grade separated crossing on Williams Road, looking west.



Williams Road, looking west.





Williams Road, looking east, towards separated rail crossing and the intersection of Williams Road at Lockbourne Industrial Parkway. Companies on Lockbourne Industrial Parkway include Honeywell Intelligrated and SupplyHouse.com.



Williams Road, looking east, providing a broader view of corridor. Intersection of Williams Road at Lockbourne Road towards center of image.





Williams Road, looking west from the separated rail crossing



Williams Road, looking west, approaching intersection of Williams Road at Lockbourne Road.





Williams Road, looking west, some commercial and significant residential.



Williams Road, looking west, agricultural on south and residential on north side.





Williams Road, looking west, agricultural on south and residential on north side.



Williams Road, looking west towards the intersection of William Road at Parsons Avenue.





Williams Road, looking west, at the intersection of William Road at Parsons Avenue.



Williams Road, looking west.



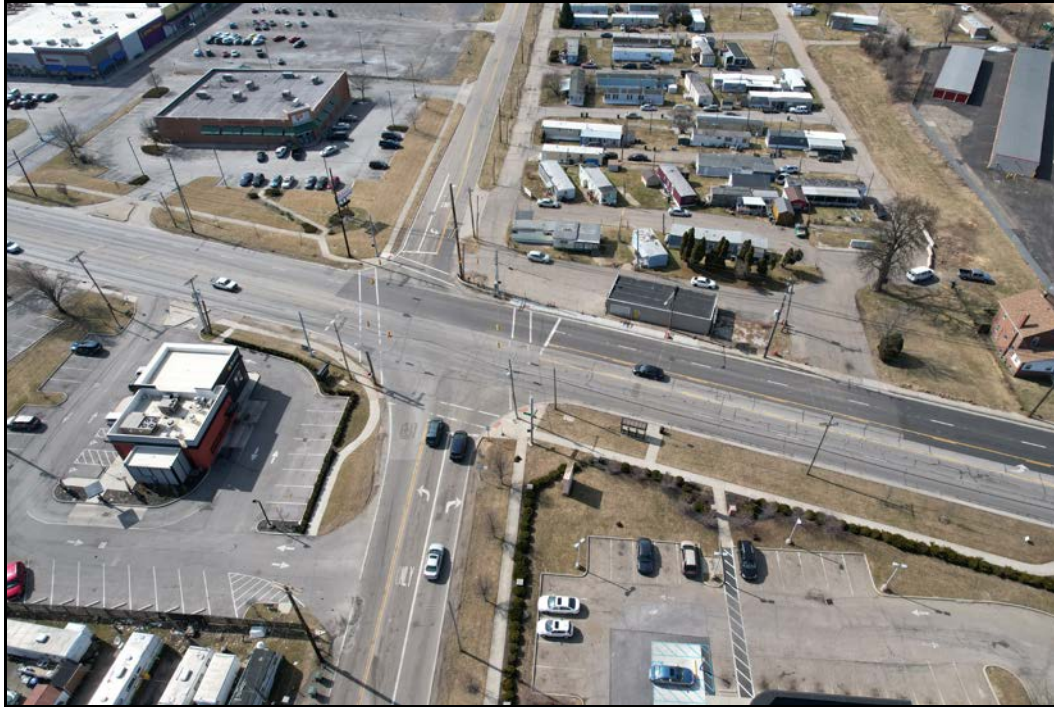


Williams Road, looking west.



Williams Road, looking west. The intersection of Williams Road at US-23 (High Street) is towards the top.





Williams Road, looking west, at the intersection of William Road and US-23 (High Street). Heer Park is at the western terminus of Williams Road and is just out of this picture. The planning project would include planning bicycle and pedestrian facilities for the final section of Williams Road, between Heer Park and US-23 (High Street).