

AIR CARGO IN CENTRAL OHIO

Updated: June 23, 2011

RICKENBACKER (LCK)

Rickenbacker International Airport is comprised of 5,000 acres and is one of the world's only cargo-dedicated airports. It has four air cargo terminal buildings with more than 200,000 square feet of space with direct airside access, plus facilities for two major shipping firms.

PORT COLUMBUS (CMH)

Port Columbus International Airport primarily serves passengers, but also handles freight shipments such as small package cargo and mail.

WHAT IS IT, AND WHY IS IT SO IMPORTANT?

Air cargo is the quickest and most reliable method of shipping freight with the least risk in damaging goods, but it is also the most costly method. Compared to other freight modes, it has relatively low fixed costs in the air craft themselves and freight handling equipment, but it has the highest variable costs in terms of fuel, labor, and maintenance. As it is the fastest mode of freight movement, it is used primarily for transportation of goods of high value or perishability.

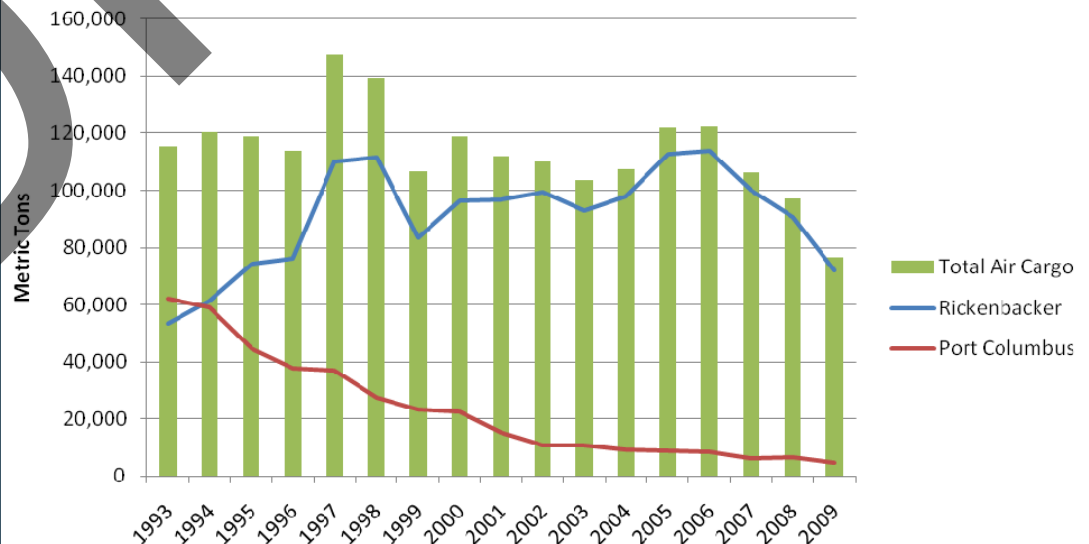
IMPORTANCE TO CENTRAL OHIO

Access to air freight is important to the type of fashion retail headquartered in central Ohio, like the Limited Brands family of companies. These companies rely on having access to a cargo airport with minimal infrastructure bottlenecks to ensure that business stays ahead of the trends. Of Ohio's 106 federally-designated airports, five are designated by the Federal Aviation Administration as "entitlement airports," which means that they are eligible for federal funding assistance due to their annual cargo volume. The entitlement airport in central Ohio is Rickenbacker International Airport.

AIR CARGO'S FUTURE

The economic recession negatively impacted freight volumes, including air cargo, worldwide. 2008 and 2009 marked the first time that world air cargo volumes contracted in two consecutive years. The total air cargo volumes in central Ohio during this period also saw a decline, as seen in the chart below. However, air cargo experts project volumes will triple over the next 20 years.

Total Volume Air Cargo - Central Ohio



Source: Columbus Regional Airport Authority (<http://www.columbusairports.com>)

morpc