

Fatal Crashes

The three-year period shows a total of 289 fatal crashes in MORPC's transportation planning area, resulting in 304 fatalities. A total of 12 percent (37) of these fatalities were pedestrians, 71 percent (215) were drivers, and 17 percent (52) were passengers. Nearly 70 percent of all people involved in fatal crashes were male. From 2005 to 2007, the number of fatal crashes decreased by nearly 16.5 percent, from 109 to 91.

The majority of fatal crashes we reported to have occurred on county roads (36 percent), followed by interstate routes (19 percent), and state routes (16 percent).

The table below illustrates that most fatalities occurred in or with passenger motor vehicles. Pedestrians and motorcyclists were also significantly represented in fatal crashes.

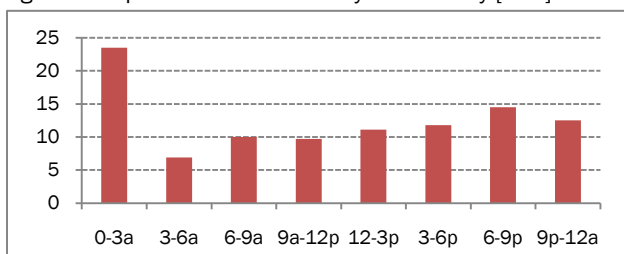
Table 1: Fatalities and Total Crashes by Type of Unit Involved

| 2005-2007 | Number of Fatalities | Total Number of Crashes | Percent Fatal |
|-----------------------|----------------------|-------------------------|---------------|
| Passenger car related | 170 | 178,272 | 0.1% |
| Pedestrian related | 37 | 1,356 | 2.7% |
| Motorcycle related | 32 | 1,377 | 2.3% |
| Bicycle related | 3 | 1,012 | 0.3% |
| Transit related | 0 | 528 | 0.0% |
| Truck related | 0 | 5,313 | 0.0% |
| School bus related | 0 | 917 | 0.0% |
| Other Modes | 62 | 53,410 | 0.1% |
| All Crashes | 304 | 242,185 | 0.1% |

Source: MORPC Crash Data 2005-2007

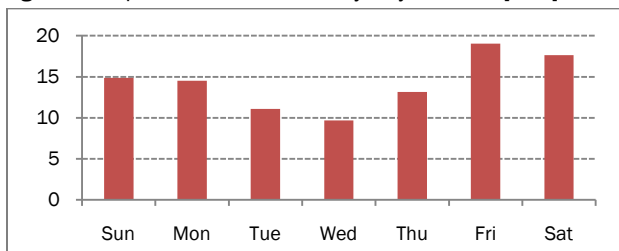
Figure 1 shows that the majority of fatal crashes (51 percent) occurred during the night between 6 p.m. and 3 a.m. Almost 37 percent of all fatal crashes occurred on Fridays and Saturdays (see Figure 2).

Figure 1: Reported Fatal Crashes by Time of Day [in %]



Source: MORPC Crash Data 2005-2007; N=289

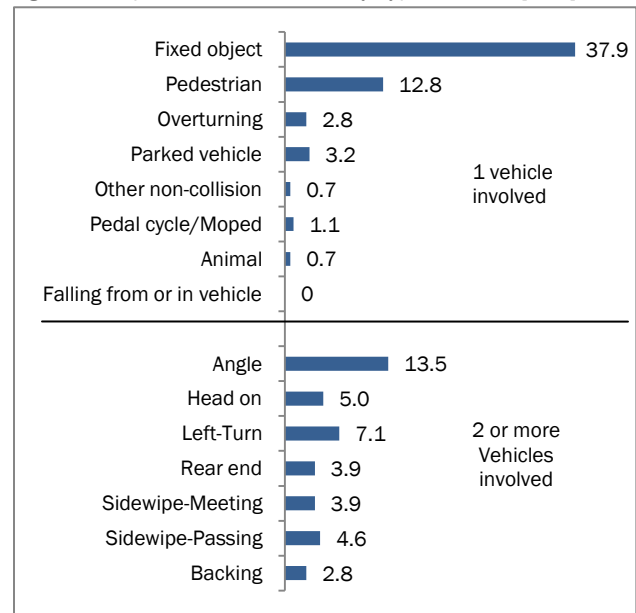
Figure 2: Reported Fatal Crashes by Day of Week [in %]



Source: MORPC Crash Data 2005-2007; N=289

The most frequent crash types that resulted in a fatal crash were fixed-object crashes (38 percent), followed by angle crashes (14 percent) and crashes involving a vehicle and a pedestrian (12 percent) (see Figure 3). Of those crashes where the probable contributing factor was reported, "failure to control," "failure to yield," "operating vehicle in reckless manner," and "running red light" were the most common ones.

Figure 3: Reported Fatal Crashes by Type of Crash [in %]



Source: MORPC Crash Data 2005-2007; N=282

Over 15 percent of the 289 fatal crashes reportedly involved alcohol and/or drugs. Speeding was reported in 9 percent of all these crashes, meaning that the actual speed was determined to be above speed limit. Potentially, more of these crashes could be the result of speed but were not reported as such.

Of the 243 fatally injured vehicle occupants, 43 percent were not wearing safety belts; of the 47 killed occupants, 43 percent were unbuckled. In addition, 29 percent of the fatally injured drivers and 35 percent of the occupants were at least partially ejected in the crash.

